

| | | | | | | |
|---|--|---|---|--|---|---|
| FRAME & FLOOR | WALLS-WINDOWS-DOORS HEIGHT 8'-3" FINISHED 8'-0" | EXTERIOR 29GA HIGH RIB STEEL | ROOF 60 MIL BLACK EPDM | ELECTRICAL SINGLE PHASE | A/C & HEAT | RESTROOMS |
| AXLES BRAKE (5) EACH NEW SHIPPING HEIGHT NOT EXCEED 14'-1" | PLATES DOUBLE TOP INTERIOR: 2"x4" EXTERIOR: 2"x6" BOTTOM INTERIOR: 2"x4" EXTERIOR: 2"x6" | OVER HOUSE WRAP OVER 5/8" CDX PLYWOOD | SHIP LOOSE 12" RUBBER ROOF CAP | ENTRANCE PANEL (5) 150 AMP | TYPE A/C | STANDARD N/A N/A HANDICAP 3 1/2 |
| HITCH REMOVABLE XXXX STANDARD | STUDS INTERIOR: 2"x4"x94 1/8" @ 16" O.C. #2 SYP EXTERIOR: 2"x6"x94 1/8" @ 16" O.C. @ SYP | INSTALL STEEL SOFFIT | STYLE TRANSVERSE/CODE | LIGHTS (51) 2X4 GP232 T-8 T-GRID LIGHTS (1) 2X2 GP232 T-8 T-GRID LIGHTS | (2) AVPA36ACA100-BM (3TON) WALL MT. (2) AVPA241ACA100-BM (2TON) WALL MT. | COMMODO(S) (2) H/C TANK TYPE / (2) R/H H/C TANK TYPE ALL COMMODOES ARE HANDICAP HEIGHT |
| I-BEAM 12" PERIMETER FRAME W/ 95 1/2" BRAKE AXLES | INSULATION R- EXTERIOR: 21K INTERIOR: 11UF | | ROOF JOIST: A&E: 2"x8"x133 1/2" @ 16" O.C. B&D: 2"x8"x132" @ 16" O.C. C: 2"x8"x130 1/2" @ 16" O.C. | LIGHTS (4) BLACK PLASTIC PORCH LIGHT W/PHOTOCELL | (5) PROGRAMMABLE T-STATS (5) SMOKE STATS | W.H. LAV N/A MIRROR (5) 18X30 S.S. FRAME BOBRICK B166 |
| JOIST MBX6.5 @ 38" O.C. ADD SLOTS: 2"x 1/4" TO IBEAM | COVERING 5/8" TYP-X VINYL COVER GYP (SAVANNAH BLUE) WALLS TO UNDERSIDE OF ROOF DECKING | | DECKING 7/16" CLASS C FR DECK | POWER VENTS (1) VENT FAN/LIGHT COMBO W/ 100 CFM EACH (2) BROAN 505 W/ 180 CFM EACH | (5) FIRE SYSTEM INTERCONNECT CONTACT | GRAB BAR (3) 36" (3) 42" @ 36" AFF / (3) 18" @ 39" |
| INSUL R- 30K CATHEDRAL | CUT BACK: INTERIOR: 12"-20" | TOP TRIM (TAUPE) 36" G-STYLE HIGH RIB STEEL MANSARD | CEILING 2'X2' T-GRID | ENTRANCE CONDUIT 1 1/2" PVC | WITHIN HVAC | VANITY (5) W/19X17 DROP IN LAV & SINGLE LEVER FAUCET |
| DECKING 3/4" T&G PLYWOOD OVER 1 1/2" 20GA GALV. B-DECK | | CUT BACK: EXTERIOR: N/A SHIP LOOSE DUMMY RIB | INSULATION R- 38UF | EXIT SIGNS (8) W/BATTERY BACK UP (3) CEILING MT DIRECTIONAL EXIT SIGNS | TYPE HEAT 10KW SUPPLY AIR SYSTEM GALVANIZED W/EXTERIOR DUCT WRAP RETURN AIR SYSTEM GALVANIZED W/EXTERIOR DUCT WRAP | URINAL N/A SHOWER N/A WATER HEATER (1) 30 GAL 4500 WATT 240V SINGLE PHASE |
| COVERING 26oz COMMERCIAL GRADE LEVER LOOP CARPET WITH UNITARY BACKING (30453) 1/8" BLOCK TILE PER PLAN (59103) | 4" (204) VINYL BASE MOLDING THRU OUT EXCEPT IN R.R. 6" (204) VINYL BASE MOLDING IN R.R. ONLY | SKIRTING: (BURNISH SLATE) (40) SHEETS 29GA STEEL SKIRTING (30) 2"x2"x8' P.T. LUMBER (20) SKIRTING VENTS | TIE DOWNS YES | EMERGENCY LIGHTS (3) XR-5 W/(1) DUAL HEAD EACH (6) WALL MT. EMERGENCY LIGHTS (18) WALL MT. J-BOXES W/ 3/4" EMT STUB THRU CEILING (5) GFI RECEPTS 42" AFF (1) GFI RECEPT @ 8" AFF | (10) BASE BOARD HEATERS PER PLAN 240v 525WATT / 4.2 AMPS | SPECIAL (2) H/C METAL MODESTY PARTITIONS (GREY) (1) STANDARD METAL MODESTY PARTITIONS (GREY) (1) URINAL SCREEN METAL MODESTY PARTITIONS (GREY) |
| CUT BACK: Finish 17" Decking 11" PROVIDE CARPET BAR FOR VCT/CARPET TRANS @ DOORS | PREFINISHED VCG MOLDING PACKAGE | DECALS MBS ON HVAC UNITS | CUT BACK: T-Grid CEILING TILE @ MATELINE Gypsum N/A | (120V WEATHERPROOF RECEPTS (1) 120V WEATHERPROOF RECEPT UNDER FLOOR FOR HEAT TAPE BY OTHER ON SITE (7) 120V DEDICATED RECEPTS (3) REINFORCED CEILING MT. J-BOX (1) FOR EVERY (2) CUBICLES (15) WALL MT. J-BOXES W/ 3/4" EMT STUB THRU CEILING 4X8 DATA BOARD (WHITE) w/ DED. QUAD & (2) 3" PVC STUB THRU FLOOR 4-WAY SWITCHER PER PLAN | | SUPPLY: COPPER WITH CUT OFFS WASTE: CAST IRON (NO HUB) / STUB THRU FLOOR ONLY (1) ICE MAKER HOOKUP (1) HIGH/LOW WATER COOLER WALL HUNG ELEC. (1) 24X24X8 TERRAZZO FLOOR MT. MOP SINK W/ HOSE, BRACKET, & MOP HANGER (3) 4" FLOOR DRAINS W/ TRAP PRIMER |

NOTE: ALL WALL DIMENSIONS ARE TO WALL FINISH AND NOT TO THE STUD!!!

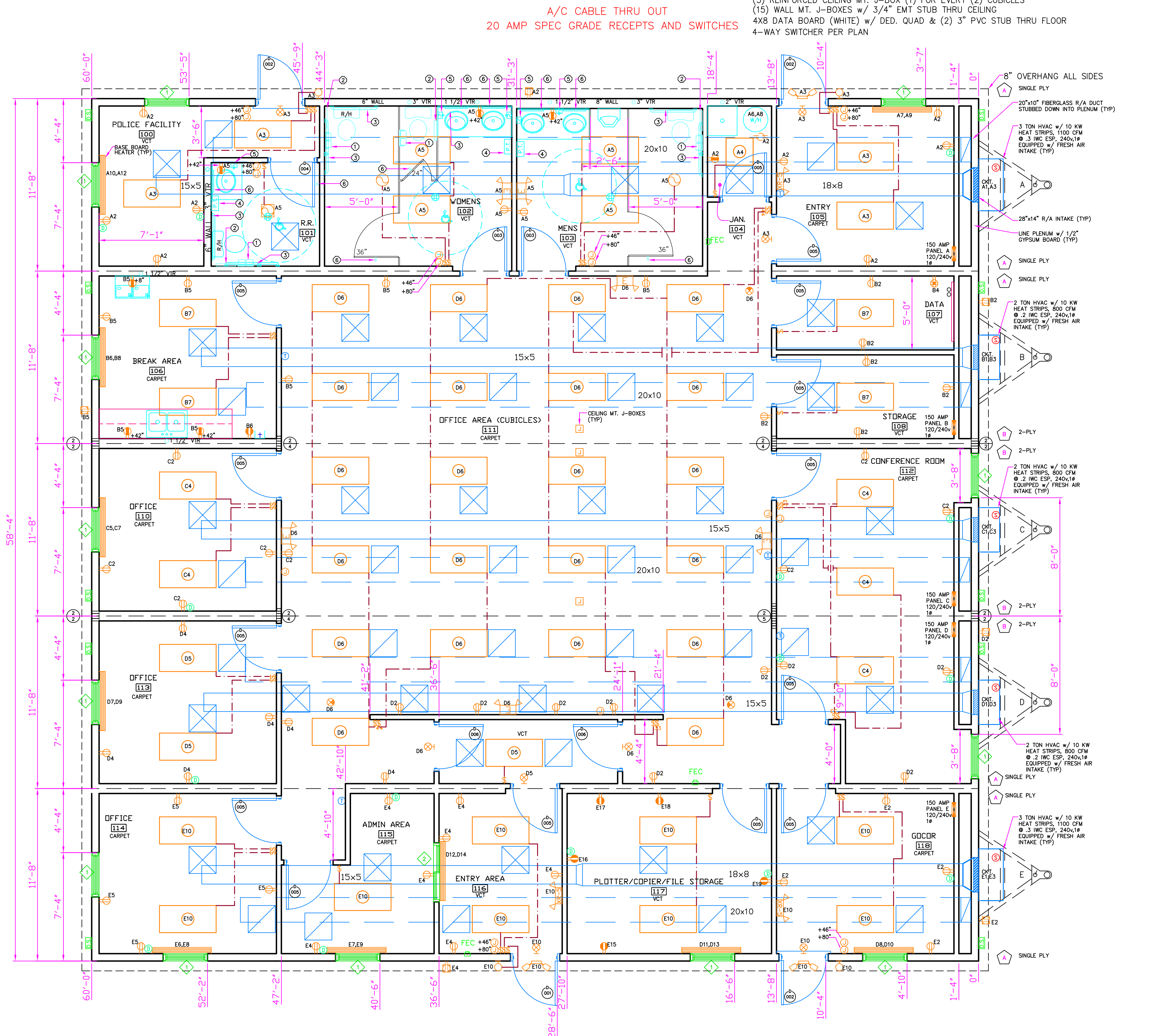
NOTE: ALL HEIGHTS SPECIFIED A.F.F. (ABOVE FINISHED FLOOR) ARE MEASURED TO THE BOTTOM OF THE OBJECT OR ITEM.

COLOR CHART

- WALLS
- WINDOWS
- DOORS
- ELECTRICAL
- WIRING
- HVAC / DUCT / DIFFUSERS
- DIMENSIONS
- TRUSS BAYS
- PLUMBING

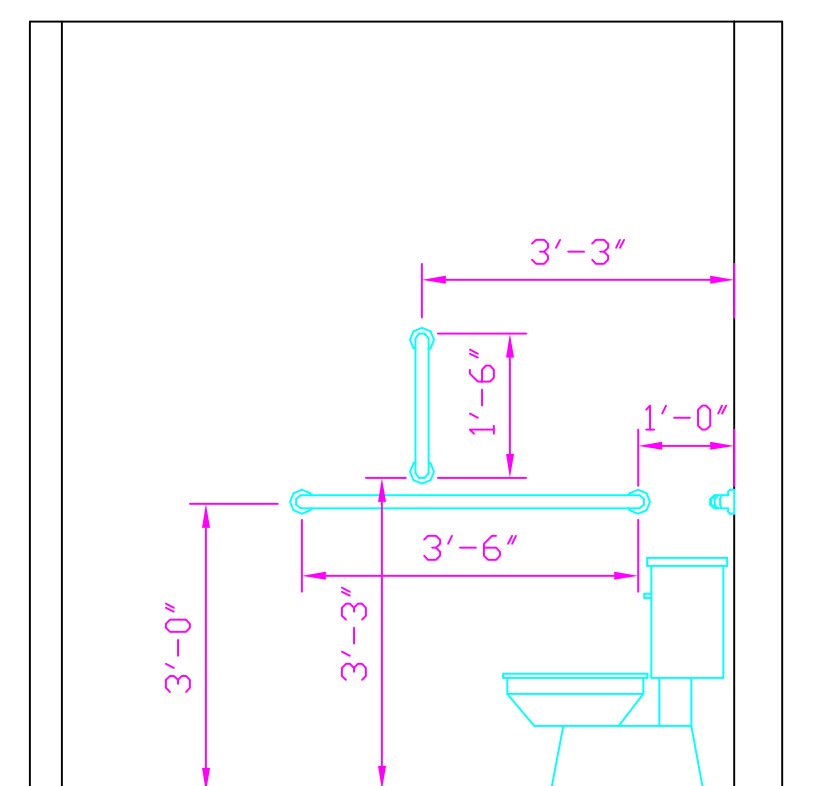
SYMBOL LEGEND

- PANEL BOX
- DUPLEX RECEPTACLE 120v
- INCANDESCENT PORCH LIGHT w/1-BOW BULB W.P.
- EXT. WEATHERPROOF 120v REC.
- DEDICATED RECEPT
- UNDER FLOOR RECEPT
- VENT FAN LIGHT COMBO
- FLUORESCENT LIGHT w/2-32w BULBS
- ENGINEERED ORDER TRUSS DESCRIPTION
- DIRECTIONAL EXIT SIGN
- SMOKESTAT
- BASEBOARD HEATER
- WALL MOUNTED LIGHTED EXIT SIGN W/ BATTERY PACK
- SINGLE SWITCH
- DOUBLE SWITCH
- 3-WAY SWITCH
- 4-WAY SWITCH
- XRS EMERGENCY LIGHT
- XRS EMERGENCY REMOTE HEAD
- JUNCTION BOX (WALL)
- PHONE/DATA BOX(WALL)
- EMERGENCY BATTERY PACK LIGHT
- 24"x24" RETURN AIR GRILLE (CEILING)
- 24"x24" SUPPLY AIR DIFFUSER (CEILING)
- THERMOSTAT
- ICEMAKER



TOILET ACCESSORY LEGEND

- BOBRICK #B-2888 DBL. ROLL TOILET PAPER DISPENSER @ 19" TO CENTER
- BOBRICK #B-301 TOILET SEAT COVER DISPENSER @ 38" TO BOTTOM
- ADA COMPLIANT TYPE 304 S.S. GRAB BARS @ 36" & 39" TO CENTER
- BOBRICK #B-262 PAPER TOWEL DISPENSER @ 42" TO BOTTOM
- BOBRICK #B-2111 LIQUID SOAP DISPENSER @ 42" TO BOTTOM
- BOBRICK #B-166 S.S. FRAMED MIRROR @ 40" TO BOTTOM
- BOBRICK #B-211 CLOTHES HOOK @ 48" TO CENTER



| REVISION/ISSUE | Date |
|----------------------------|--------|
| 1 RELOCATED T-STATS PER CM | 9/5/13 |
| 2 SIGN-OFF CHANGES FROM CM | 9/5/13 |

APPROVED
RADCO
 Oct 16, 2013
 APPROVED

THIRD PARTY INSPECTION AGENCY
 RADCO
 5456-A WEST CRENSHAW STREET
 TAMPA, FLORIDA 33634

CARL A. DEMETER, PROFESSIONAL ENGINEER
 N.J. LIC. NO. GE 36039

SIGNATURE DATE 10-15-13

STRUCTURAL DESIGN & MANAGEMENT, INC.

11356 W. COAL MINE DR.
 LITTLETON, CO 80127

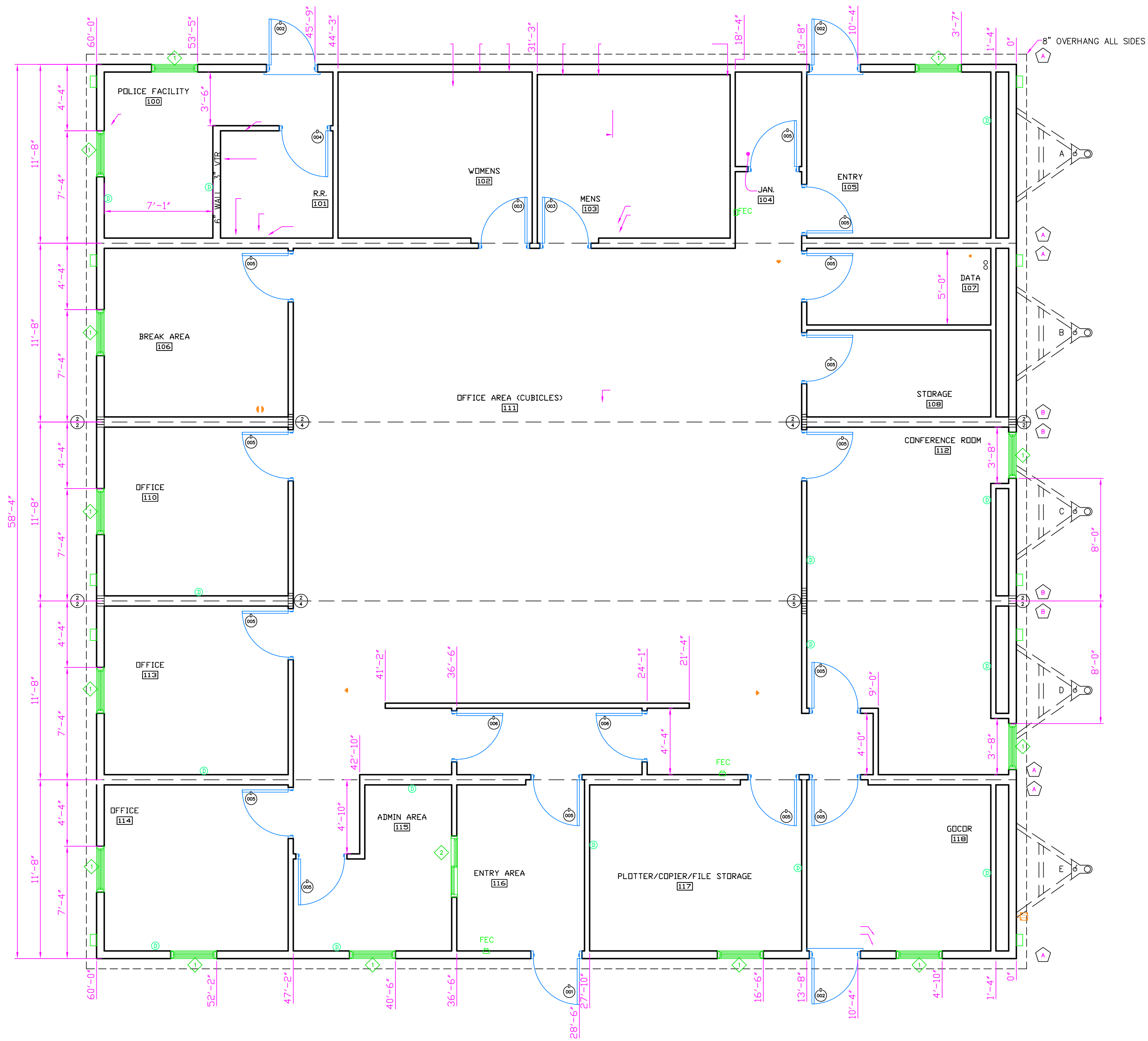
Phone: (303) 972-6512
 Fax: (775) 655-5831
 cademeter@comcast.net

MANUFACTURER:
KINGS CUSTOM BUILDERS, INC
 1608 US HIGHWAY 19S
 ELLAVILLE, GA 31806
 PH: 229-937-2538
 FX: 229-937-2150

DEALER:
CHUCK McBRIDE
 MODULAR BUILDING SYSTEMS, LLC
 235 BAYFIELD COURT
 MILTON, GEORGIA 30004-3683
 (678)297-0033

PROJECT:
 PORT AUTHORITY OF NY&NJ
 BAYONNE BRIDGE- AKB-264-039
 SKANSKAKOCH-KIEWIT JOINT VENTURE
 WEST 1ST STREET AND JFK BOULEVARD
 BAYONNE, NEW JERSEY 07002

| | | |
|-----------------------------|-------------------------|---------------------|
| SERIAL# K071335342 A-E | Model# 60X60 | APPROVAL# |
| SALESPERSON: MATTHEW TAYLOR | DRAWN BY: THOMAS WADSEY | |
| CODE: NJ/TBC | LABEL: NJ/RADCO | Sheet: A3 |
| Date: 4 Oct. 2013 | OCCUPANCY: BUSINESS | COMBINED FLOOR PLAN |
| Scale: 1/4" = 1'-0" | QUOTE# MT2521 | |



| DOOR AND FRAME SCHEDULE | | | | | | | | | |
|-------------------------|------|-----------|-------|---------|--|-----------|------------------|-------------|--|
| Quantity | MARK | DOOR SIZE | | GLAZING | HWD TYPE | FRAME | STYLE | FIRE RATING | NOTES |
| | | WD | HGT | | | | | | |
| 1 | 001 | 3'-0" | 7'-0" | FULL | RIM PANIC W/BEST IC CORES | ALUM. | BRZ/STOREFRONT | N/A | W/CLOSER & DOOR SECURITY BAR W/PAD LOCK (40 KEYS) |
| 3 | 002 | 3'-0" | 6'-8" | 6X30 | 93K ENTRANCE GRADE 1 LEVER LOCK W/ BEST IC CORES | STEEL | STEEL | N/A | W/CLOSER W/SECURITY BAR W/PAD LOCK (40 KEYS) |
| 2 | 003 | 3'-0" | 6'-8" | N/A | PUSH/PULL LATCHING | REDIFRAME | IMPERIAL OAK S/C | 20 MIN | W/DORMA 641 PA CLOSER W/BOBRICK B211 CLOTHE HOOKS |
| 1 | 004 | 3'-0" | 6'-8" | N/A | 93K BEST GRADE 1 PRIVACY LEVER W/BOBRICK B211 CLOTHE HOOKS | REDIFRAME | IMPERIAL OAK S/C | 20 MIN | W/DORMA 641 PA CLOSER W/ BOBRICK B211 CLOTHE HOOKS |
| 14 | 005 | 3'-0" | 6'-8" | N/A | BEST GRADE 1 93K KEVED LEVER W/ BEST IC CORES | REDIFRAME | IMPERIAL OAK S/C | 20 MIN | W/DORMA 641 PA CLOSER |
| 2 | 006 | 3'-0" | 6'-8" | N/A | BEST GRADE 1 93K PASSAGE LEVER | REDIFRAME | IMPERIAL OAK S/C | 20 MIN | W/DORMA 641 PA CLOSER |

| WINDOW SCHEDULE | | | | | | |
|-----------------|------|-------|--------|-------------|-------------|--|
| Quantity | MARK | SIZE | | Style | Sill Height | FRAME/GLASS |
| | | WIDTH | HEIGHT | | | |
| 10 | 1 | 3'-0" | 5'-0" | Single Hung | 1'-8" | V/S BRZ/LOW E INSULATED DP 55 W/1" ALUM MINI BLINDS & LOW VOLTAGE WIRE STUBBED INTO WINDOW SILL & SECURITY SCREENS |
| 1 | 2 | 4'-0" | 3'-0" | Glider | 3'-8" | PASS THRU H/S W/BRONZE TRACK W/ CLEAR LAMINATE GLASS W/LOCK |

| REVISION/ISSUE | Date |
|----------------------------|--------|
| 1 RELOCATED T-STATS PER CM | 9/5/13 |
| 2 SIGN-OFF CHANGES FROM CM | 9/5/13 |

APPROVED RADCO APPROVED
Oct 16, 2013

THIRD PARTY INSPECTION AGENCY
RADCO
5456-A WEST CRENSHAW STREET
TAMPA, FLORIDA 33634

CARL A. DEMETER, PROFESSIONAL ENGINEER
N.J. LIC. NO. GE 36039
(Signature)
SIGNATURE DATE 10-15-13

STRUCTURAL DESIGN & MANAGEMENT, INC.
(Logo)
6638 W. Ottawa Ave.
Suite 115
Littleton, CO 80128
Phone: (303) 972-6512
Fax: (775) 655-5831
cademeter@comcast.net

MANUFACTURER:
KINGS CUSTOM BUILDERS, INC
1608 US HIGHWAY 19S
ELLAVILLE, GA 31806
PH: 229-937-2538
FX: 229-937-2150

DEALER:
CHUCK McBRIDE
MODULAR BUILDING SYSTEMS, LLC
235 BAYFIELD COURT
MILTON, GEORGIA 30004-3683
(678)297-0033

PROJECT:
PORT AUTHORITY OF NY&NJ
BAYONNE BRIDGE- AKB-264-039
SKANSKAKOCH-KIEWIT JOINT VENTURE
WEST 1ST STREET AND JFK BOULEVARD
BAYONNE, NEW JERSEY 07002

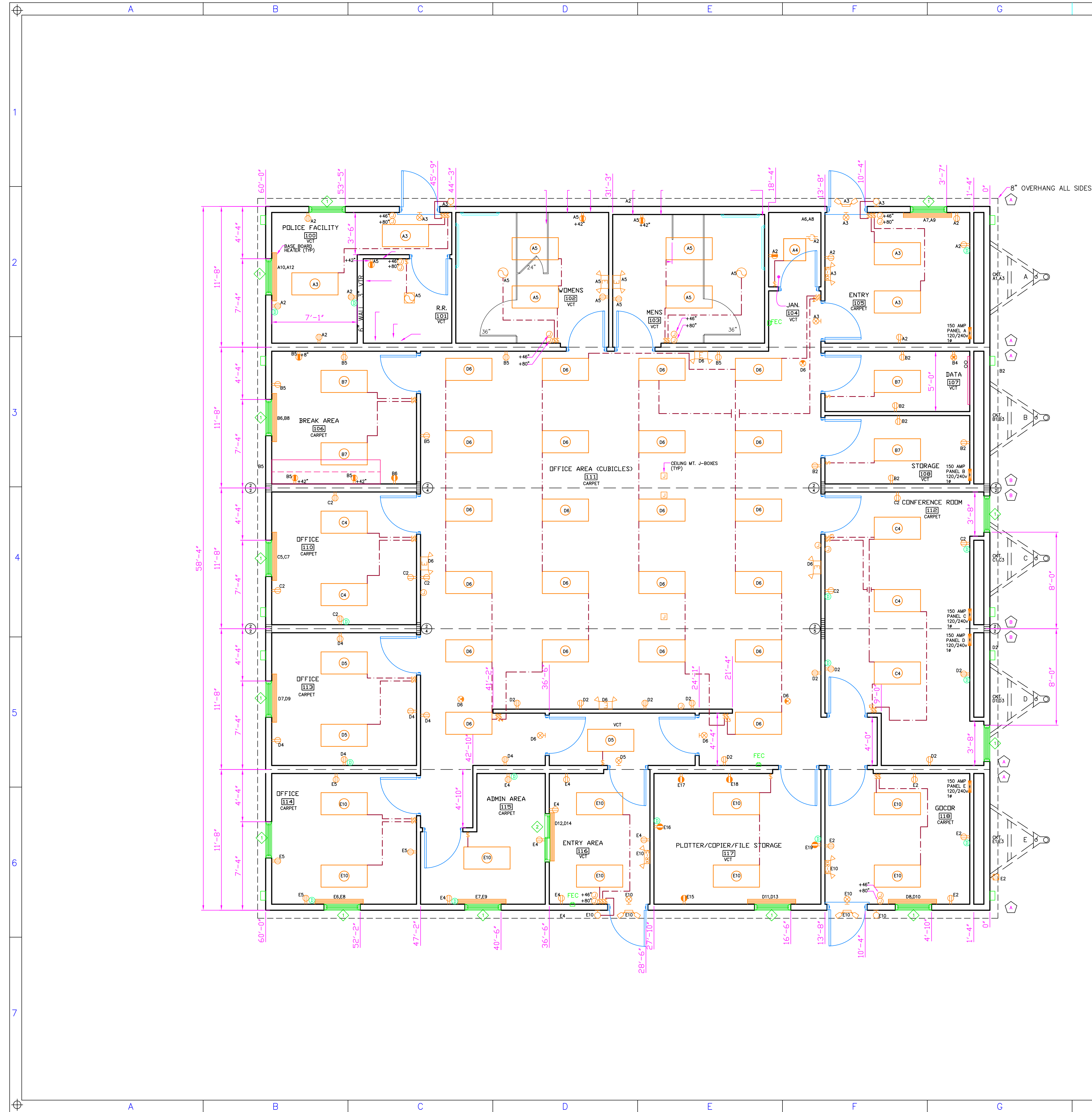
SERIAL# K071335342 A-E

| SALES/PERSON | DRAWN BY | MODEL # | APPROVAL # |
|---------------|----------------|---------|------------|
| MATHEW TAYLOR | THOMAS WOODLEY | 60X60 | |

CODE: NJ/TBC LABEL: NJ/RADCO Sheet: **A4**

Date: 30 JULY 2013 OCCUPANCY: BUSINESS FLOOR PLAN

Scale: 1/4" = 1'-0" QUOTE# MY2521



| A 150 AMP PANEL | | | | | |
|-----------------|-------------------|------|-----------|-----|-------------------|
| NO. | DESCRIPTION | BRKR | WIRE SIZE | NO. | DESCRIPTION |
| 1 | A/C | 60 | 6 | 2 | RECEPTS |
| 3 | RESTROOMS | 20 | 12 | 4 | RECEPTS |
| 5 | RESTROOMS | 20 | 12 | 6 | LIGHTS |
| 7 | BASE BOARD HEATER | 20 | 12 | 8 | WATER HEATER |
| 9 | BASE BOARD HEATER | 20 | 12 | 10 | BASE BOARD HEATER |
| 11 | | | | 12 | BASE BOARD HEATER |
| 13 | | | | 14 | |
| 15 | | | | 16 | |
| 17 | | | | 18 | |
| 19 | | | | 20 | |
| 21 | | | | 22 | |
| 23 | | | | 24 | |
| 25 | | | | 26 | |
| 27 | | | | 28 | |
| 29 | | | | 30 | |

TOTAL ACTUAL LTG. VA 378 MIN. CODE LTG. VA 2500 (.710 SF + .35) = 2500 VA
 TOTAL PANEL VA (LOAD = (CONTIN.) 2500 + (NON-CONT.) 2160 + (MOTOR/HVAC/OTHER) 2048) = 25128 VA
 PANEL AMPS = TOTAL VA 25128 / 240 V = 105 AMPS + 10% GROWTH 115 AMPS

| B 150 AMP PANEL | | | | | |
|-----------------|-------------|------|-----------|-----|-------------------|
| NO. | DESCRIPTION | BRKR | WIRE SIZE | NO. | DESCRIPTION |
| 1 | A/C | 60 | 6 | 2 | RECEPTS |
| 3 | RECEPTS | 60 | 6 | 4 | RECEPTS |
| 5 | RECEPTS | 20 | 12 | 6 | LIGHTS |
| 7 | LIGHTS | 20 | 12 | 8 | BASE BOARD HEATER |
| 9 | | | | 10 | |
| 11 | | | | 12 | |
| 13 | | | | 14 | |
| 15 | | | | 16 | |
| 17 | | | | 18 | |
| 19 | | | | 20 | |
| 21 | | | | 22 | |
| 23 | | | | 24 | |
| 25 | | | | 26 | |
| 27 | | | | 28 | |
| 29 | | | | 30 | |

TOTAL ACTUAL LTG. VA 256 MIN. CODE LTG. VA 1008 (.388 SF + .35) = 1008 VA
 TOTAL PANEL VA (LOAD = (CONTIN.) 1008 + (NON-CONT.) 8540 + (MOTOR/HVAC/OTHER) 1408) = 24756 VA
 PANEL AMPS = TOTAL VA 24756 / 240 V = 103 AMPS + 10% GROWTH 113 AMPS

| C 150 AMP PANEL | | | | | |
|-----------------|-------------------|------|-----------|-----|-------------------|
| NO. | DESCRIPTION | BRKR | WIRE SIZE | NO. | DESCRIPTION |
| 1 | A/C | 60 | 6 | 2 | RECEPTS |
| 3 | RECEPTS | 60 | 6 | 4 | RECEPTS |
| 5 | RECEPTS | 20 | 12 | 6 | LIGHTS |
| 7 | BASE BOARD HEATER | 20 | 12 | 8 | BASE BOARD HEATER |
| 9 | | | | 10 | |
| 11 | | | | 12 | |
| 13 | | | | 14 | |
| 15 | | | | 16 | |
| 17 | | | | 18 | |
| 19 | | | | 20 | |
| 21 | | | | 22 | |
| 23 | | | | 24 | |
| 25 | | | | 26 | |
| 27 | | | | 28 | |
| 29 | | | | 30 | |

TOTAL ACTUAL LTG. VA 320 MIN. CODE LTG. VA 1512 (.432 SF + .35) = 1512 VA
 TOTAL PANEL VA (LOAD = (CONTIN.) 1512 + (NON-CONT.) 1800 + (MOTOR/HVAC/OTHER) 13000) = 18332 VA
 PANEL AMPS = TOTAL VA 18332 / 240 V = 76 AMPS + 10% GROWTH 84 AMPS

| D 150 AMP PANEL | | | | | |
|-----------------|-------------------|------|-----------|-----|-------------------|
| NO. | DESCRIPTION | BRKR | WIRE SIZE | NO. | DESCRIPTION |
| 1 | A/C | 60 | 6 | 2 | RECEPTS |
| 3 | RECEPTS | 60 | 6 | 4 | RECEPTS |
| 5 | RECEPTS | 20 | 12 | 6 | LIGHTS |
| 7 | BASE BOARD HEATER | 20 | 12 | 8 | BASE BOARD HEATER |
| 9 | BASE BOARD HEATER | 20 | 12 | 10 | BASE BOARD HEATER |
| 11 | BASE BOARD HEATER | 20 | 12 | 12 | BASE BOARD HEATER |
| 13 | BASE BOARD HEATER | 20 | 12 | 14 | BASE BOARD HEATER |
| 15 | | | | 16 | |
| 17 | | | | 18 | |
| 19 | | | | 20 | |
| 21 | | | | 22 | |
| 23 | | | | 24 | |
| 25 | | | | 26 | |
| 27 | | | | 28 | |
| 29 | | | | 30 | |

TOTAL ACTUAL LTG. VA 1664 MIN. CODE LTG. VA 3696 (.1056 SF + .35) = 3696 VA
 TOTAL PANEL VA (LOAD = (CONTIN.) 3696 + (NON-CONT.) 2880 + (MOTOR/HVAC/OTHER) 15224) = 28920 VA
 PANEL AMPS = TOTAL VA 28920 / 240 V = 120 AMPS + 10% GROWTH 132 AMPS

| E 150 AMP PANEL | | | | | |
|-----------------|-------------------|------|-----------|-----|-------------------|
| NO. | DESCRIPTION | BRKR | WIRE SIZE | NO. | DESCRIPTION |
| 1 | A/C | 60 | 6 | 2 | RECEPTS |
| 3 | RECEPTS | 60 | 6 | 4 | RECEPTS |
| 5 | RECEPTS | 20 | 12 | 6 | RECEPTS |
| 7 | BASE BOARD HEATER | 20 | 12 | 8 | BASE BOARD HEATER |
| 9 | BASE BOARD HEATER | 20 | 12 | 10 | LIGHTS |
| 11 | SPARE | 20 | 12 | 12 | SPARE |
| 13 | SPARE | 20 | 12 | 14 | SPARE |
| 15 | RECEPT | 20 | 12 | 16 | RECEPT |
| 17 | RECEPT | 20 | 12 | 18 | RECEPT |
| 19 | RECEPT | 20 | 12 | 20 | SPARE |
| 21 | | | | 22 | SPARE |
| 23 | | | | 24 | |
| 25 | | | | 26 | |
| 27 | | | | 28 | |
| 29 | | | | 30 | |

TOTAL ACTUAL LTG. VA 576 MIN. CODE LTG. VA 2620 (.710 SF + .35) = 2620 VA
 TOTAL PANEL VA (LOAD = (CONTIN.) 2620 + (NON-CONT.) 14500 + (MOTOR/HVAC/OTHER) 15696) = 32786 VA
 PANEL AMPS = TOTAL VA 32786 / 240 V = 136 AMPS + 10% GROWTH 149 AMPS

| REVISION/ISSUE | Date |
|----------------------------|--------|
| 1 RELOCATED T-STATS PER CM | 9/5/13 |
| 2 SIGN-OFF CHANGES FROM CM | 9/5/13 |

APPROVED RADCO APPROVED
 Oct 16, 2013

THIRD PARTY INSPECTION AGENCY
 RADCO
 5456-A WEST CRENSHAW STREET
 TAMPA, FLORIDA 33634

CARL A. DEMETER, PROFESSIONAL ENGINEER
 N.J. LIC. NO. GE 36039
 SIGNATURE: *[Signature]* DATE: 10-15-13

STRUCTURAL DESIGN & MANAGEMENT, INC.

 6638 W. Ottawa Ave.
 Suite 115
 Littleton, CO 80128
 Phone: (303) 972-6512
 Fax: (775) 655-6831
 cademeter@comcast.net

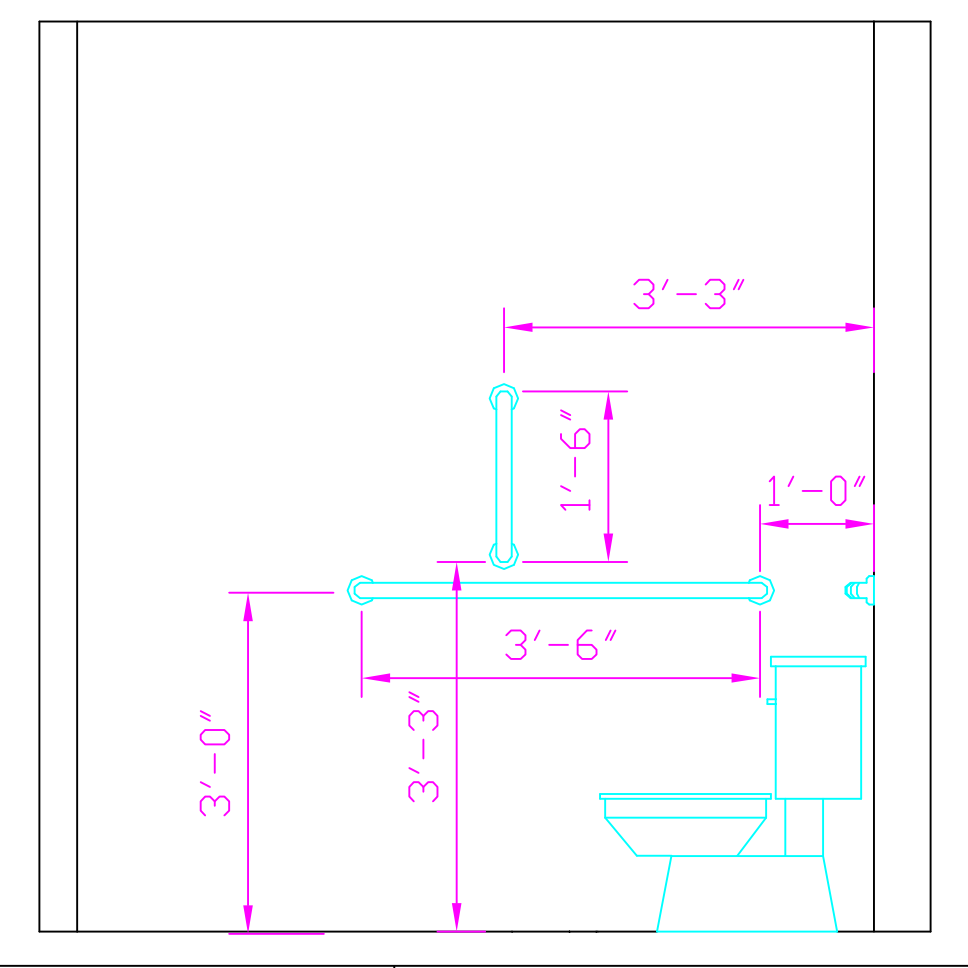
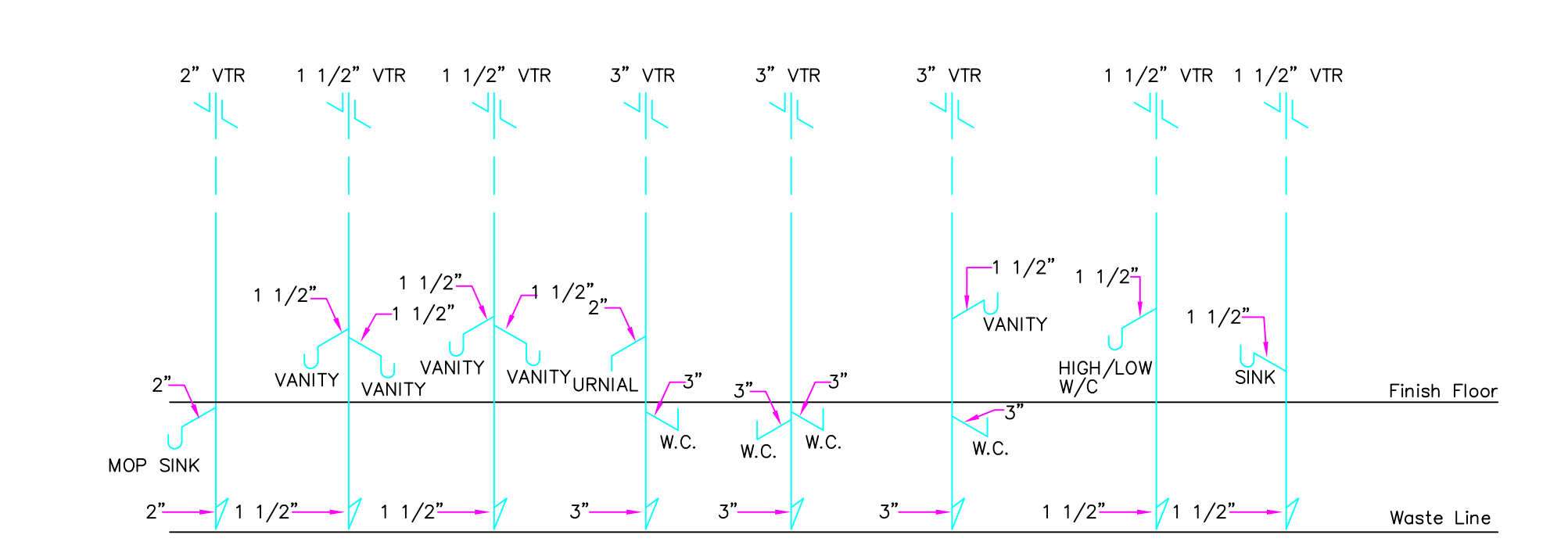
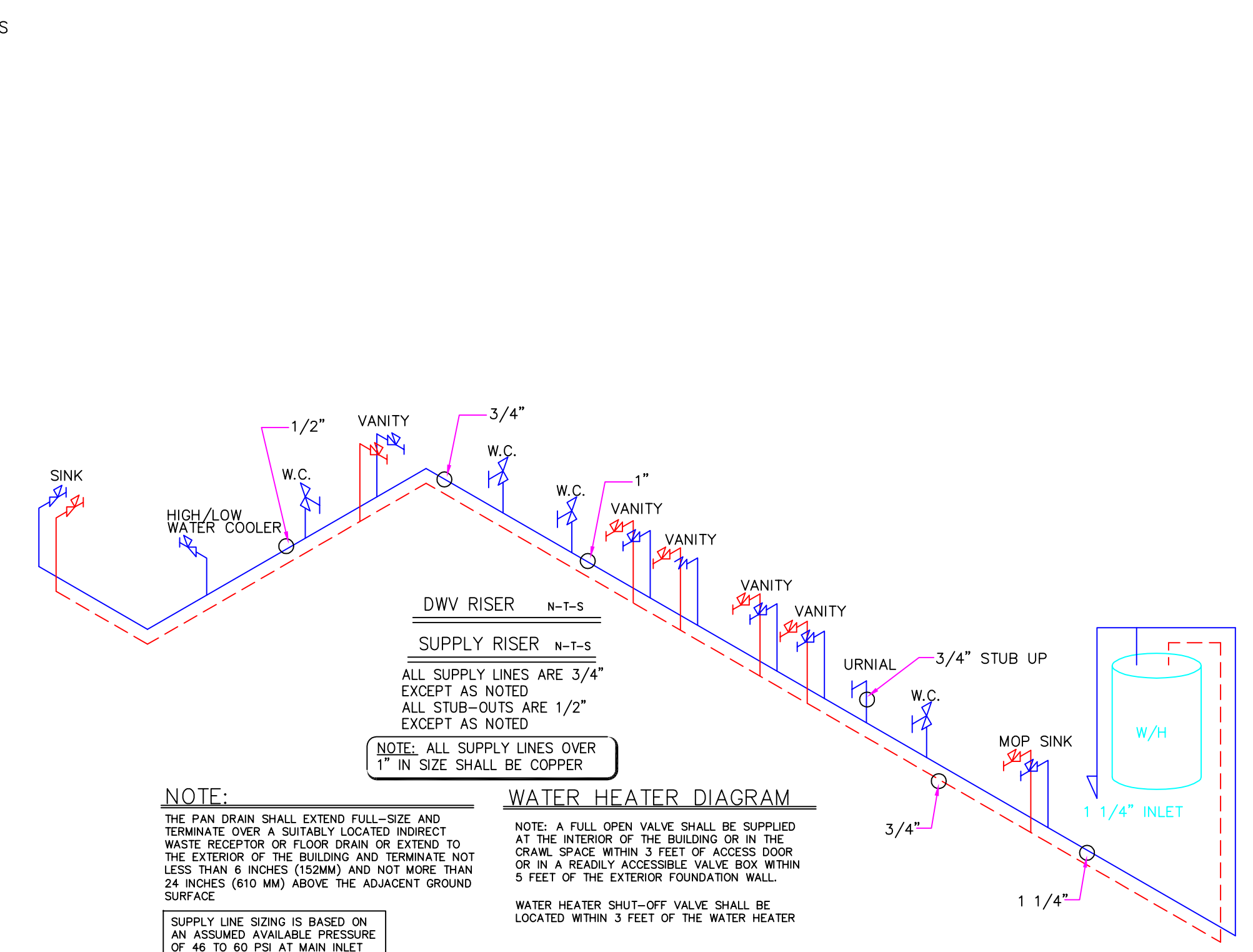
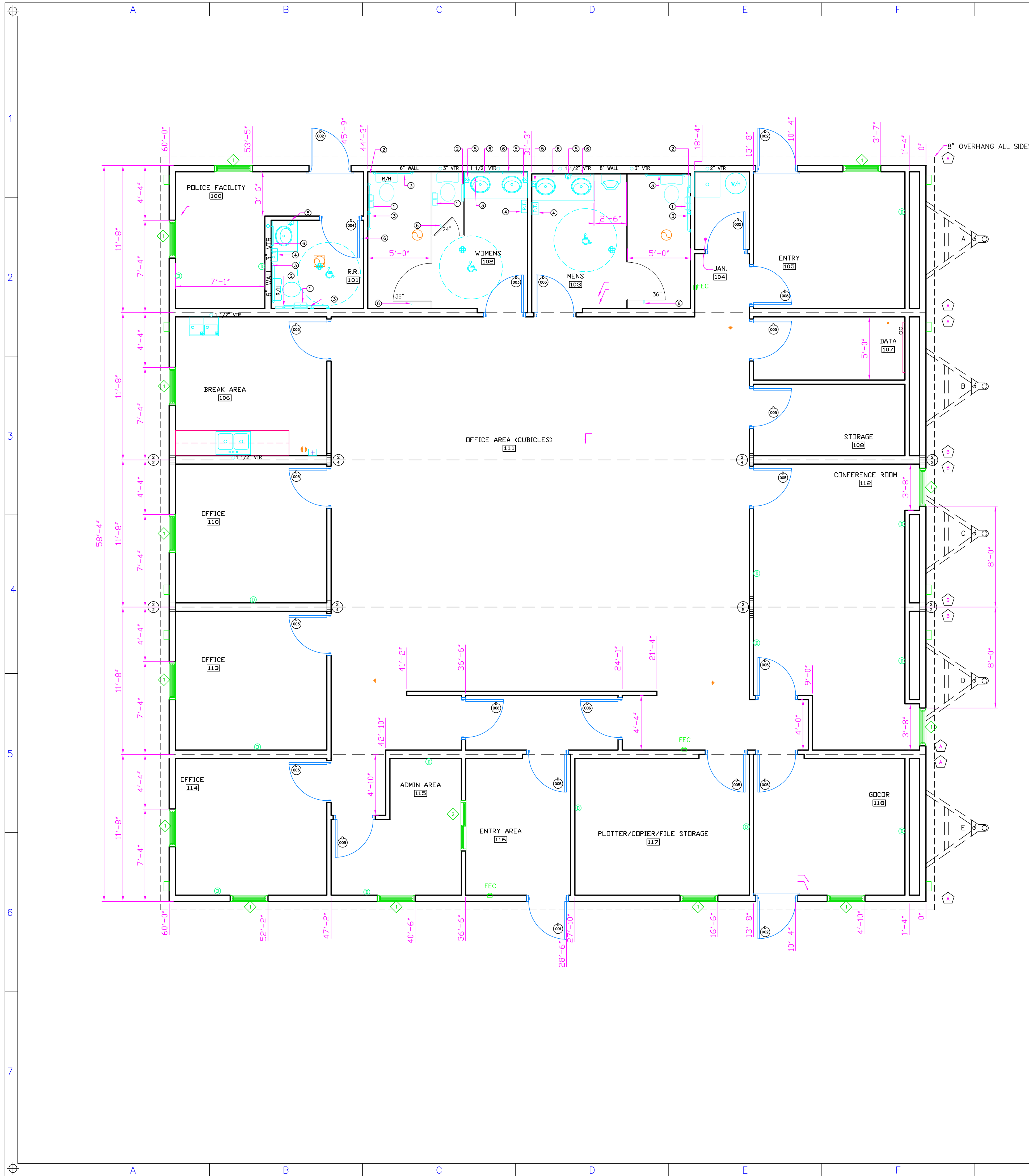
MANUFACTURER:
 KINGS CUSTOM BUILDERS, INC
 1608 US HIGHWAY 19S
 ELLAVILLE, GA 31806
 PH: 229-937-2538
 FX: 229-937-2150

DEALER:
 CHUCK McBRIDE
 MODULAR BUILDING SYSTEMS, LLC
 235 BAYFIELD COURT
 MILTON, GEORGIA 30004-3683
 (678)297-0033

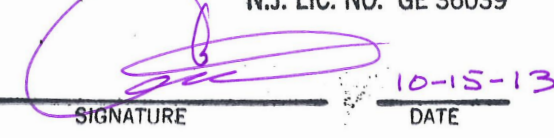
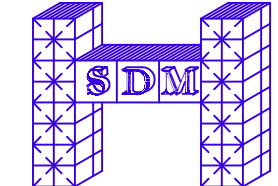
PROJECT:
 PORT AUTHORITY OF NY&NJ
 BAYONNE BRIDGE- AKB-264-039
 SKANSKAKOCH-KIEWIT JOINT VENTURE
 WEST 1ST STREET AND JFK BOULEVARD
 BAYONNE, NEW JERSEY 07002

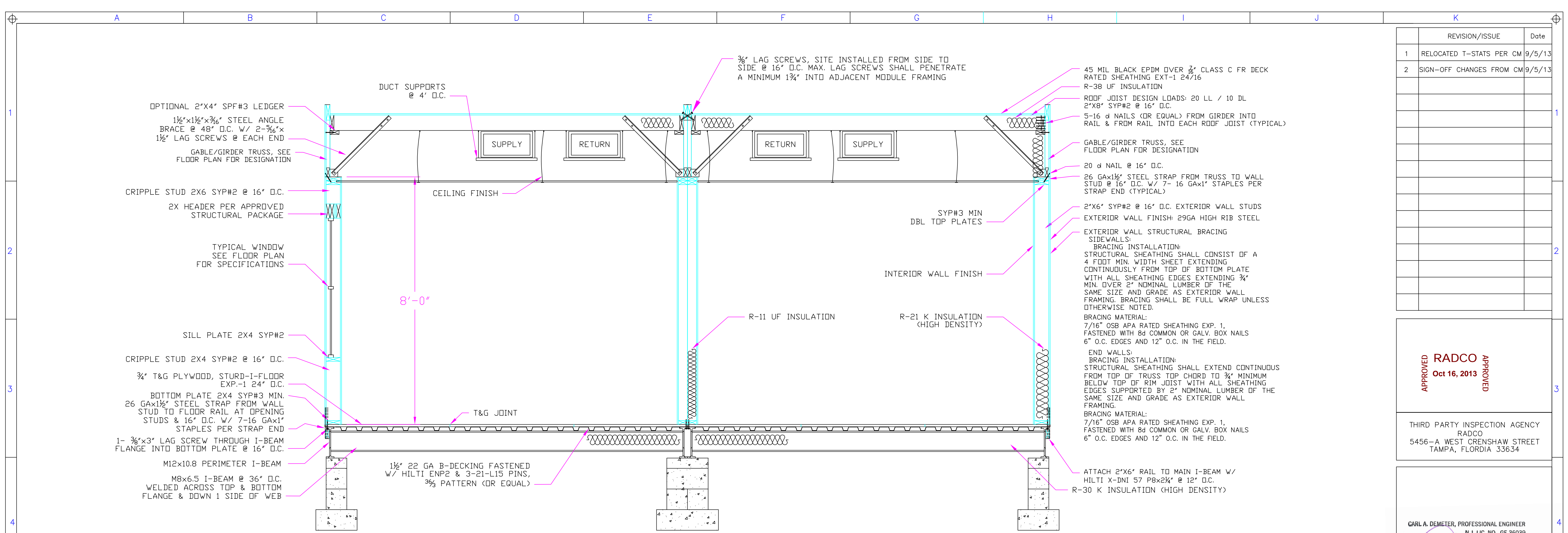
SERIAL# K071335342 A-E

| | | | |
|--------------------------------|-----------------------------|-----------------------|-----------|
| SALESPERSON: MATTHEW TAYLOR | DRAWN BY: THOMAS WOODSEY | MODEL# 60X60 | APPROVAL# |
| CODE: NJ/RBC | LABEL: NJ/RADCO | Sheet: | |
| Date: 4 OCT. 2013 | OCCUPANCY: BUSINESS | E1 | |
| Scale: 1/4" = 1'-0" | QUOTE# MT2521 | ELECTRICAL FLOOR PLAN | |



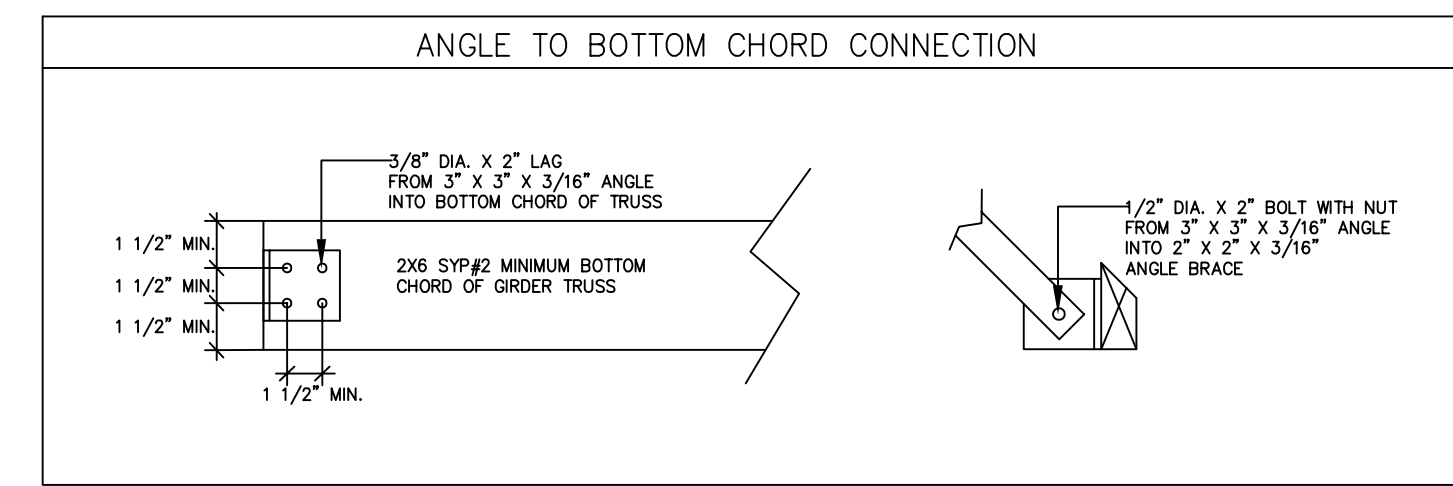
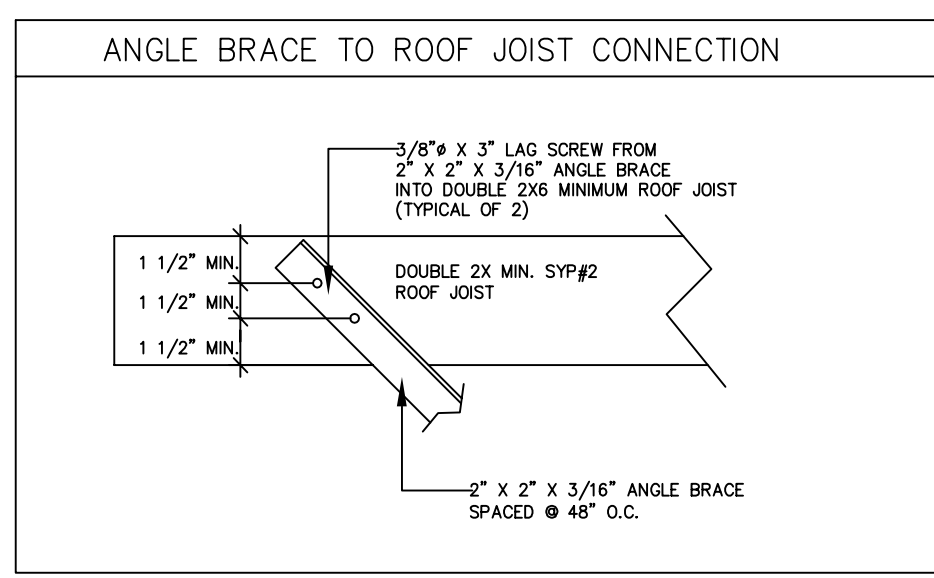
| REVISION/ISSUE | Date |
|----------------------------|--------|
| 1 RELOCATED T-STATS PER CM | 9/5/13 |
| 2 SIGN-OFF CHANGES FROM CM | 9/5/13 |

| | |
|---|-----------------------------|
| APPROVED Oct 16, 2013 APPROVED | |
| THIRD PARTY INSPECTION AGENCY RADCO 5456-A WEST CRENSHAW STREET TAMPA, FLORIDA 33634 | |
| CARL A. DEMETER, PROFESSIONAL ENGINEER N.J. LIC. NO. GE 36039  SIGNATURE DATE 10-15-13 | |
| STRUCTURAL DESIGN & MANAGEMENT, INC.  6638 W. Ottawa Ave. Suite 115 Littleton, CO 80128 Phone: (303) 972-6512 Fax: (775) 655-6831 cademeter@comcast.net | |
| MANUFACTURER: KINGS CUSTOM BUILDERS, INC 1608 US HIGHWAY 19S ELLAVILLE, GA 31806 PH: 229-937-2538 FX: 229-937-2150 | |
| DEALER: CHUCK McBRIDE MODULAR BUILDING SYSTEMS, LLC 235 BAYFIELD COURT MILTON, GEORGIA 30004-3683 (678)297-0033 | |
| PROJECT: PORT AUTHORITY OF NY&NJ BAYONNE BRIDGE- AKB-264-039 SKANSKAKOCH-KIEWIT JOINT VENTURE WEST 1ST STREET AND JFK BOULEVARD BAYONNE, NEW JERSEY 07002 | |
| SERIAL# K071335342 A-E | |
| SALESPERSON: MATTHEW TAYLOR | DRAWN BY: THOMAS WOODLEY |
| MODEL # 60X60 | APPROVAL # 7 |
| CODE: NJ/IBC | LABEL: NJ/RADCO |
| Date: 4 OCT. 2013 | OCCUPANCY: BUSINESS |
| Scale: 1/4" = 1'-0" | QUOTE # MT2521 |
| Sheet: P1 PLUMBING FLOOR PLAN | |

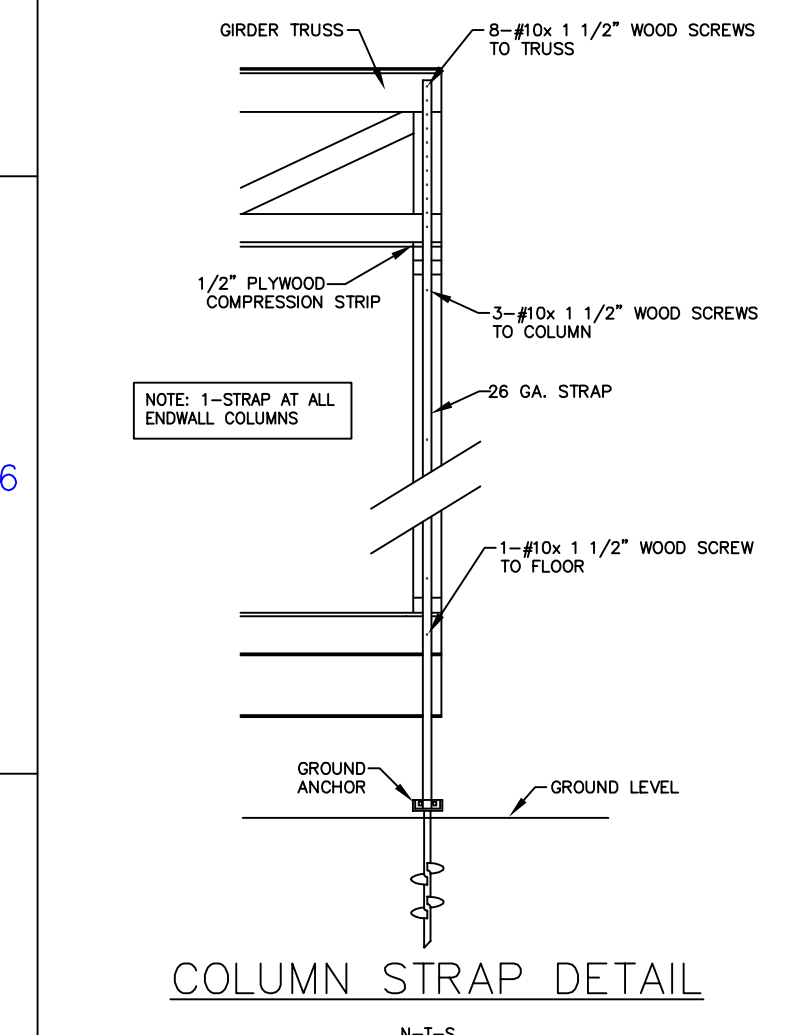


GENERAL CROSS SECTION NOTES

- UNLESS OTHERWISE SPECIFIED, ALL STEEL MUST COMPLY WITH ASTM A36, YIELD STRENGTH = 36 KSI.
- ALL LAG SCREWS MUST COMPLY WITH ANSI / ASME B18.2.1.



- NOTES:**
- DESIGN IS BASED ON 130 MPH EXPOSURE C, I = 1.0, ROOF SLOPE < 5°, MEAN ROOF HEIGHT < 15 FEET.
 - WALL HEIGHT = 9'-1 1/2" MAXIMUM.
 - GIRDER TRUSS HEIGHT = 36" MAXIMUM.
 - ALL LUMBER HOLDING MEMBERS SHALL BE SYP.
 - ANGLE BRACE MATERIAL SHALL MEET ASTM A563 SS STEEL GRADE 33 OR BETTER, F_y = 33 KSI MINIMUM. INSTALL 7/16" PREDRILLED HOLES TO RECEIVE 3/8" BOLTS AND 3/8" LAG SCREWS; AND 9/16" PREDRILLED HOLES TO RECEIVE 1/2" SCREWS.
 - LAG SCREWS SHALL MEET ANSI/ASME B18.2.1, F_u = 60 KSI. PREDRILL 1/4" HOLES IN LUMBER TO RECEIVE 3/8" LAG SCREWS.
 - BOLTS SHALL MEET ASTM A325, F_u = 120 KSI. PREDRILLED HOLES IN LUMBER SHALL BE A MINIMUM OF 1/32" TO A MAXIMUM OF 1/16" LARGER THAN THE BOLT DIAMETER.
 - CENTER LINE OF LAG SCREWS AND BOLTS SHALL NOT BE INSTALLED CLOSER THAN 1 1/2" FROM EDGES OF LUMBER NOR WITHIN 1 1/2" OF END OR EDGE OF LOADED SIDE OF ANGLES NOR WITHIN 3/4" OF EDGE OF UNLOADED SIDE OF ANGLES.
 - ANGLE BRACES SHALL BE INSTALLED AT A 45° ANGLE.



26 GAUGE COLUMN STRAPPING INFORMATION

INDICATES NO. OF STEEL STRIPS INSTALLED AT SUPPORT COLUMN LOCATIONS (EACH HALF)

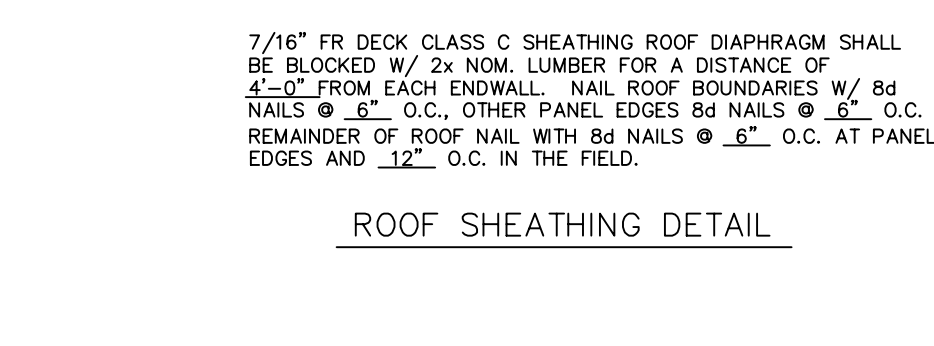
INDICATES NO. OF STUDS INSTALLED AT SUPPORT COLUMN LOCATIONS (EACH HALF)

ISOLATED COLUMNS ARE MANUFACTURED OF 2"x4" SPF #2 LUMBER COLUMNS AT ENDS OF MATE LINE WALLS ARE 2"x4" SPF #2 LUMBER

ALL COLUMN STUDS SHALL BE GLUED TOGETHER TO BE USED WITH 10\"/>

WITH A MAXIMUM 3/4\"/>

MIN. EACH END FROM GIRDER TRUSS/BEAM TO COLUMN, AND COLUMN TO FLOOR UNLESS OTHERWISE NOTED.



| REVISION/ISSUE | Date |
|----------------------------|--------|
| 1 RELOCATED T-STAYS PER CM | 9/5/13 |
| 2 SIGN-OFF CHANGES FROM CM | 9/5/13 |

APPROVED **RADCO** **APPROVED**
 Oct 16, 2013

THIRD PARTY INSPECTION AGENCY
 RADCO
 5456-A WEST CRENSHAW STREET
 TAMPA, FLORIDA 33634

CARL A. DEMETER, PROFESSIONAL ENGINEER
 N.J. LIC. NO. GE 36039

(Signature) 10-15-13
 SIGNATURE DATE

STRUCTURAL DESIGN & MANAGEMENT, INC.

SDM

6638 W. Ottawa Ave. Suite 115
 Littleton, CO 80128

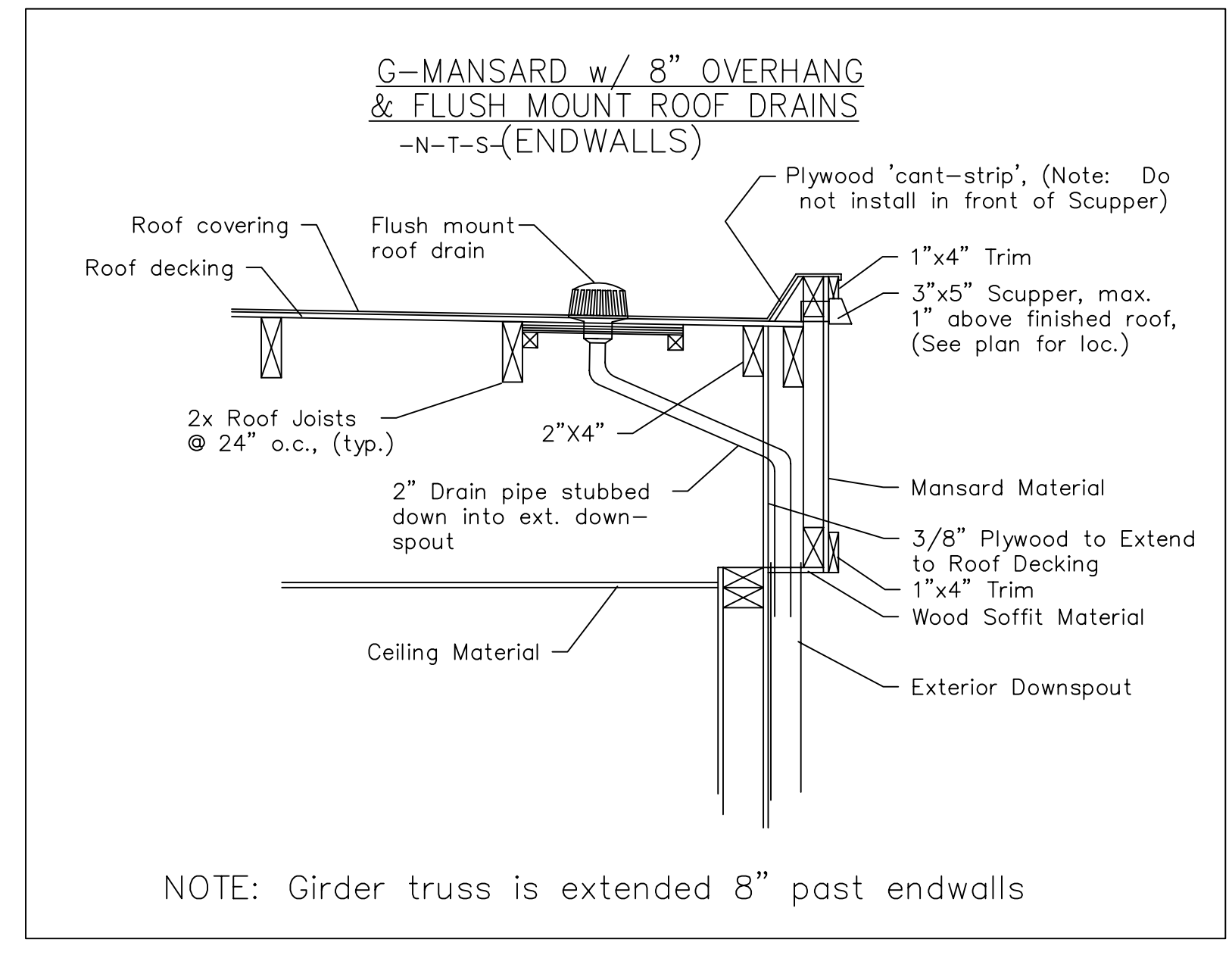
Phone: (303) 972-6512
 Fax: (775) 655-6831
 cademeter@comcast.net

MANUFACTURER:
 KINGS CUSTOM BUILDERS, INC
 1608 US HIGHWAY 19S
 ELLAVILLE, GA 31806
 PH: 229-937-2538
 FX: 229-937-2150

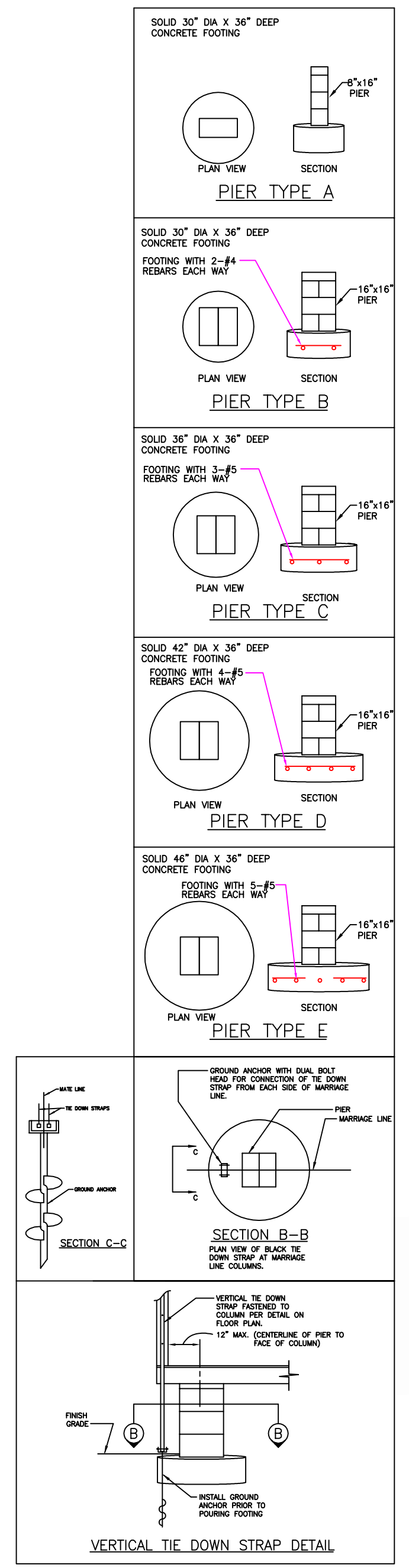
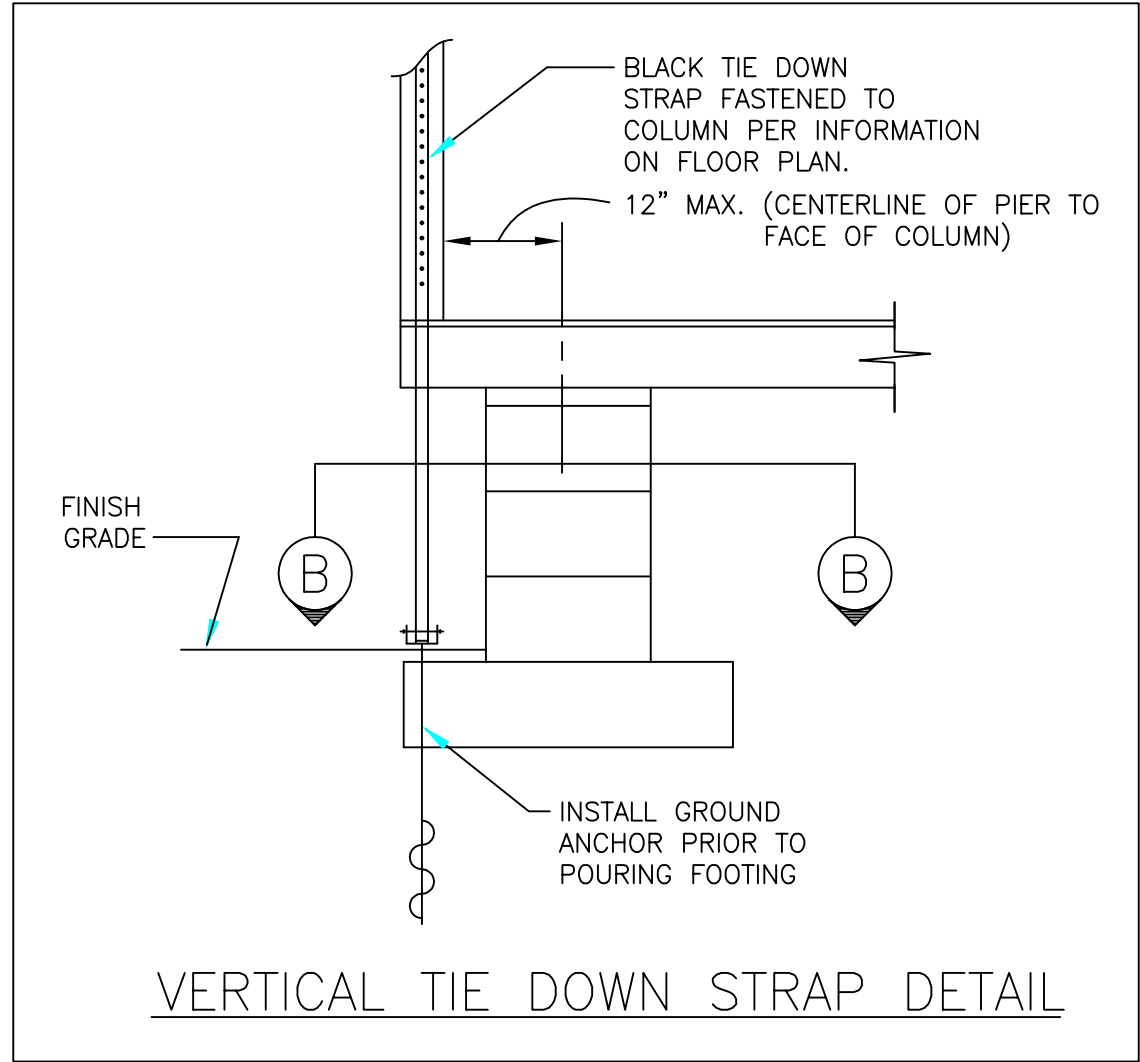
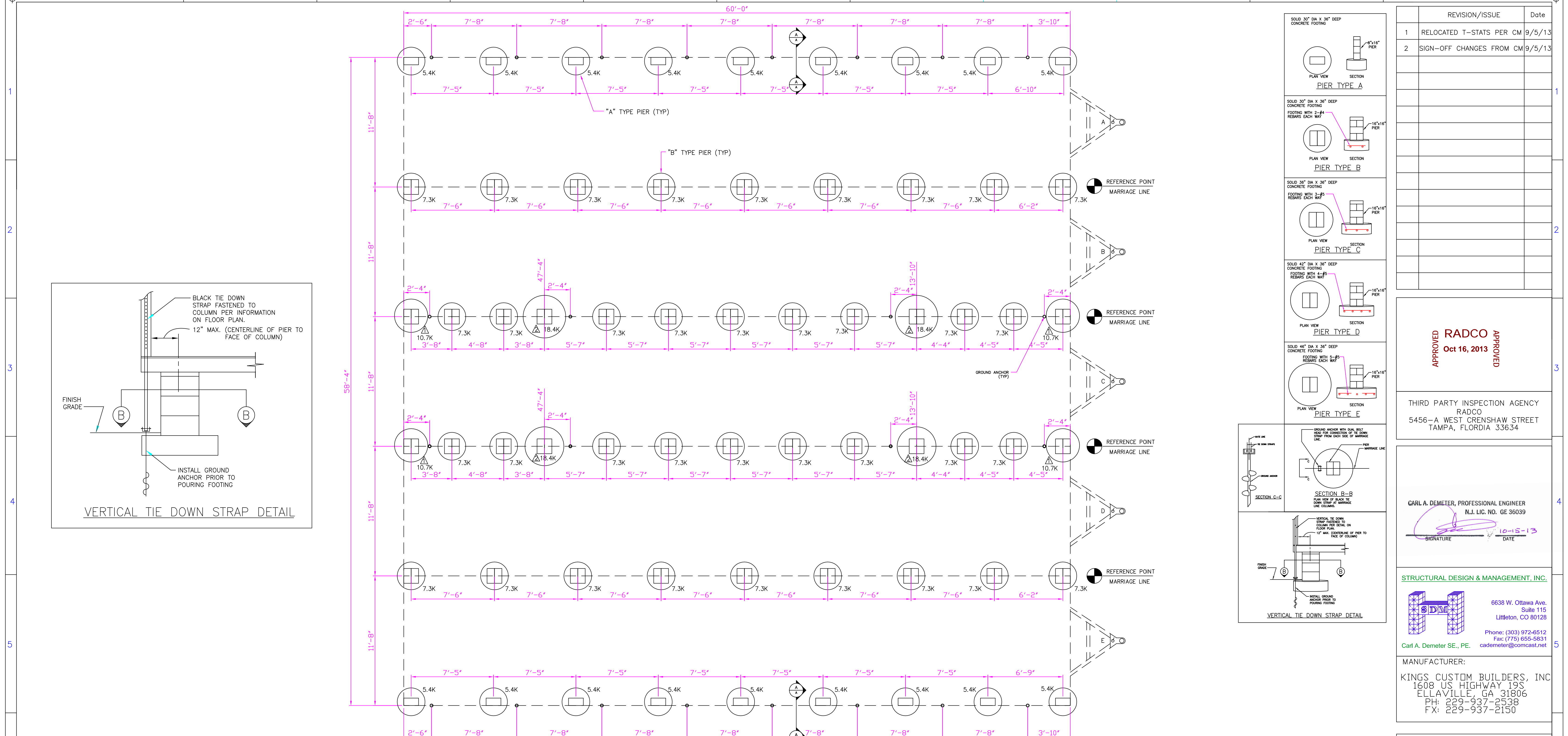
DEALER:
 CHUCK McBRIDE
 MODULAR BUILDING SYSTEMS, LLC
 235 BAYFIELD COURT
 MILTON, GEORGIA 30004-3683
 (678)297-0033

PROJECT:
 PORT AUTHORITY OF NY&NJ
 BAYONNE BRIDGE- AKB-264-039
 SKANSKAKOCH-KIEWIT JOINT VENTURE
 WEST 1ST STREET AND JFK BOULEVARD
 BAYONNE, NEW JERSEY 07002

| SERIAL# K071335342 A-E | | | |
|--------------------------------|----------------------------|-----------------|-----------|
| SALESPERSON: MATTHEW TAYLOR | DRAWN BY: THOMAS WOLSEY | MODEL# 60X60 | APPROVAL# |
| CODE: NJ/IBC | LABEL: NJ/RADCO | Sheet: | |
| Date: 30 JULY 2013 | OCCUPANCY: BUSINESS | S1 | |
| Scale: 1/4" = 1'-0" | QUOTE# MT2521 | XSEC | |



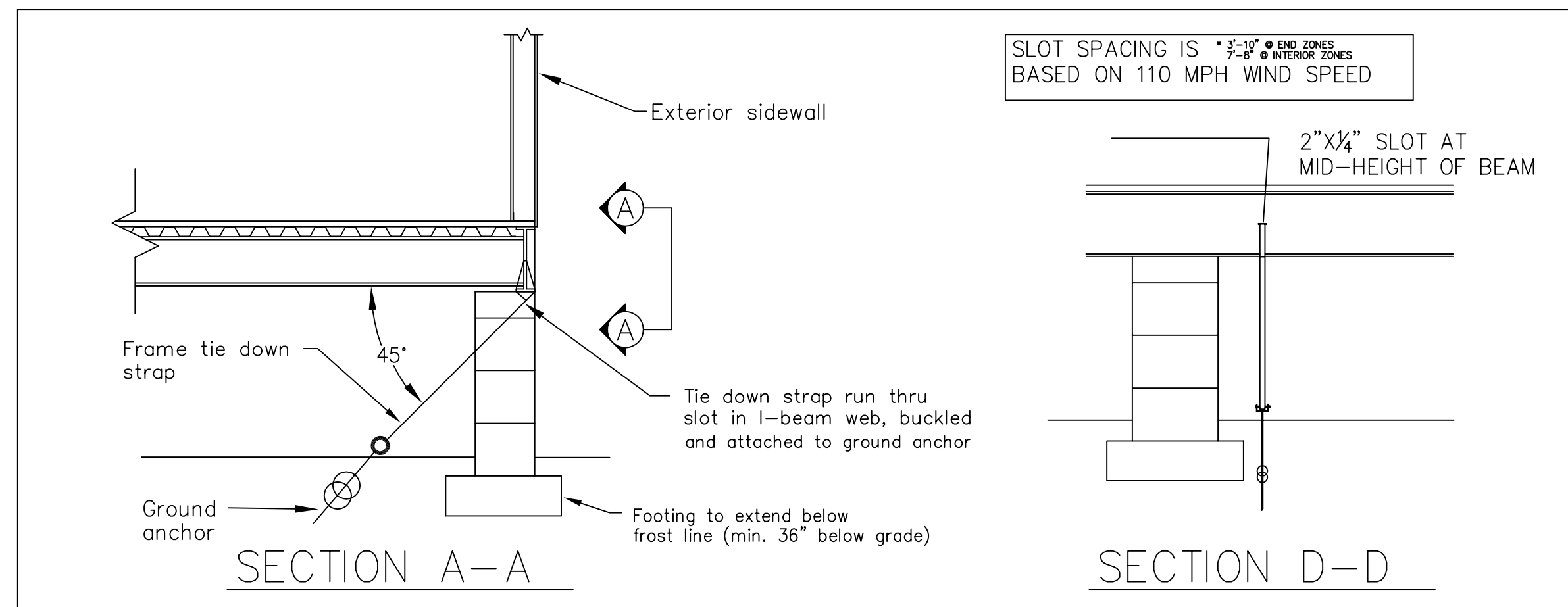
NOTE: Girder truss is extended 8" past endwalls



- FOUNDATION NOTES:**
- ALL FOUNDATION CONSTRUCTION, MATERIALS, AND INSTALLATION SHALL BE IN ACCORDANCE WITH ALL APPLICABLE STATE AND LOCAL CODES.
 - TI-E-DOWN STRAPS TO BE 1/4\"/>

| MINIMUM SOIL BEARING CAPACITY | MAXIMUM SIDEWALL A PIER SPACING | DESIGN LIVE LOADS |
|-------------------------------|---------------------------------|---------------------------------|
| 2000 PSF | PER PLAN | FLOOR - 50 PSF ROOF - 20 PSF |
| MINIMUM SOIL BEARING CAPACITY | MAXIMUM MATELINE PIER SPACING | DESIGN LIVE LOADS |
| 2000 PSF | PER PLAN | FLOOR - 50 PSF ROOF - 20 PSF |

| MARRIAGE WALL PIER REQUIREMENTS | | | |
|---------------------------------|-------------------------------|---|--|
| PIER NUMBER | MINIMUM SOIL BEARING CAPACITY | PIER TYPE | NUMBER OF BLACK TIE DOWN STRAPS REQ'D. (EACH MODULE) |
| 1 | 2000 PSF | C | 1 |
| 2 | 2000 PSF | E *PIER MUST BE FILLED SOLID WITH CONCRETE | 1 |



| REVISION/ISSUE | Date |
|----------------------------|--------|
| 1 RELOCATED T-STATS PER CM | 9/5/13 |
| 2 SIGN-OFF CHANGES FROM CM | 9/5/13 |

APPROVED
 Oct 16, 2013
APPROVED

THIRD PARTY INSPECTION AGENCY
 RADCO
 5456-A WEST CRENSHAW STREET
 TAMPA, FLORIDA 33634

CARL A. DEMETER, PROFESSIONAL ENGINEER
 N.J. LIC. NO. GE 36039

[Signature]
 SIGNATURE DATE 10-15-13

STRUCTURAL DESIGN & MANAGEMENT, INC.

[Logo]

6638 W. Ottawa Ave. Suite 115
 Littleton, CO 80128
 Phone: (303) 972-8512
 Fax: (775) 655-5831
 cademeter@comcast.net

MANUFACTURER:
 KINGS CUSTOM BUILDERS, INC
 1608 US HIGHWAY 19S
 ELLAVILLE, GA 31806
 PH: 229-937-2538
 FX: 229-937-2150

DEALER:
 CHUCK McBRIDE
 MODULAR BUILDING SYSTEMS, LLC
 235 BAYFIELD COURT
 MILTON, GEORGIA 30004-3683
 (678)297-0033

PROJECT:
 PORT AUTHORITY OF NY&NJ
 BAYONNE BRIDGE- AKB-264-039
 SKANSKAKOCH-KIEWIT JOINT VENTURE
 WEST 1ST STREET AND JFK BOULEVARD
 BAYONNE, NEW JERSEY 07002

SERIAL# K071335342 A-E

| | | | |
|--------------------------------|------------------------------|-----------------|-----------|
| SALESPERSON: MATTHEW TAYLOR | DRAWN BY: THOMAS WOLSELEY | MODEL# 60X60 | APPROVAL# |
|--------------------------------|------------------------------|-----------------|-----------|

CODE: NJ/IBC LABEL: NJ/RADCO Sheet: **S2**

Date: 4 OCT. 2013 OCCUPANCY: BUSINESS FOUNDATION

Scale: 1/4" = 1'-0" QUOTE# MT2521

ALL DATA SHOULD BE PHYSICALLY VERIFIED BEFORE CONSTRUCTION OF FOUNDATION. THE CONTRACTOR PROVIDING FOUNDATION CONSTRUCTION SERVICES WILL ULTIMATELY BE RESPONSIBLE FOR THE FOUNDATION AND ANY FLAWS CONTAINED THEREIN.

NOTE:
 THIS FOUNDATION PLAN IS PROVIDED FOR REFERENCE AS A TYPICAL STANDARD. ACTUAL FOUNDATION CONDITIONS MUST BE EVALUATED FOR APPLICABILITY IF THIS PLAN IS TO BE USED. ALTERNATE FOUNDATION PLANS MAY BE DESIGNED BY OTHERS IN ACCORDANCE WITH THE REQ'S. OF THE JURISDICTION HAVING AUTHORITY.