

# FACTORY-BUILT MEDICAL CLINICS & HEALTHCARE BUILDINGS

Choose from dozens of pre-designed floor plans for a low-cost, fast-track building solution.

## SPECIALIZING IN:

- Medical Clinics
- Rural Health Clinics
- “Swing Space” when Remodeling
- Administrative Offices
- Laboratories
- Behavioral Health Facilities
- Chemo Infusion Clinics
- X-Ray, MRI and Cat Scan Suites
- Pharmacies
- In-Service Training Classrooms
- Emergency Rooms

**QUICK  
QUOTES**  
FOR POPULAR PLANS  
AVAILABLE AT  
[ROSEMEDICALBUILDINGS.COM](http://ROSEMEDICALBUILDINGS.COM)



You can have a custom building delivered to your site within 3-6 months at a fraction of the cost of site-built construction.

**(888) 608-1173**

Call now for a FREE design consultation.

**ROSE OFFICE SYSTEMS, INC.**

COMMERCIAL MODULAR CLINICS AND ADMIN OFFICES

[WWW.ROSEMEDICALBUILDINGS.COM](http://WWW.ROSEMEDICALBUILDINGS.COM)

Providing “built-to-last” custom modular buildings to the Southeast USA for over two decades!









## Benefits of ROSE Modular Buildings

- Fast-track construction in climate controlled factory
- Engineered drawings included in price
- Delivered to your site 90% complete
- Setup and ready to occupy weeks after delivery
- Purchase, Rental or Lease-to-Own programs
- Built to meet IBC and state code requirements
- Choose from dozens of floorplans or design your own







**Imagine having a new custom-built medical clinic or office building on your site within months. Rose can make that happen.**





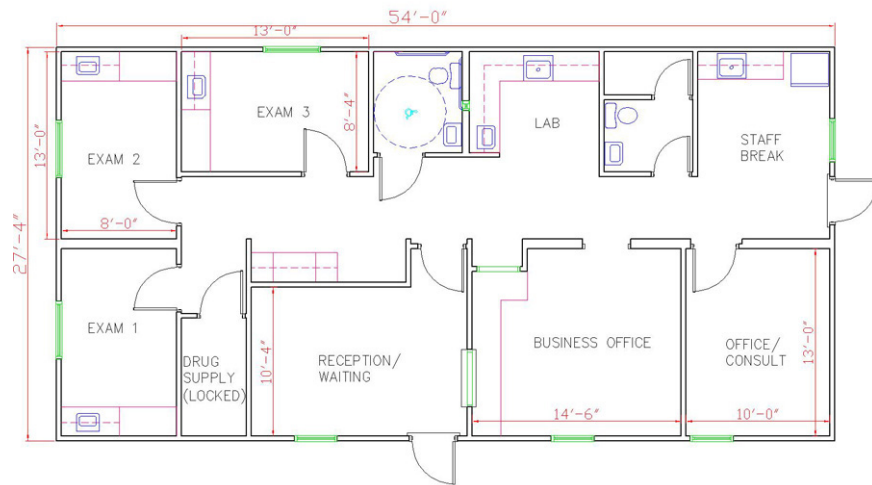


## **Purchase, Lease or Lease-to-Own...**

**Whether temporary or permanent space is needed, Rose can provide a sturdy, heavy-duty building that will enhance your hospital campus.**



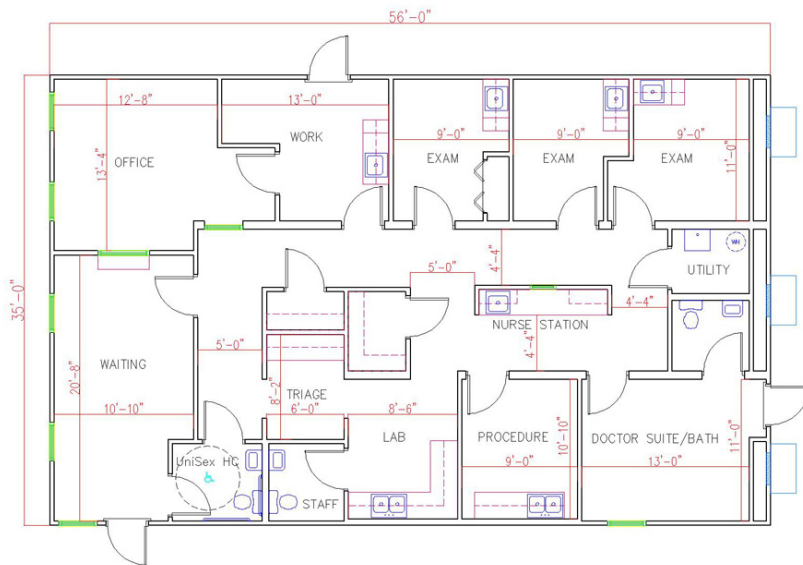




## THE VERNON CLINIC:

Size: 28'x54'  
Square Feet: 1,512

Private Offices: 1  
Exam Rooms: 3



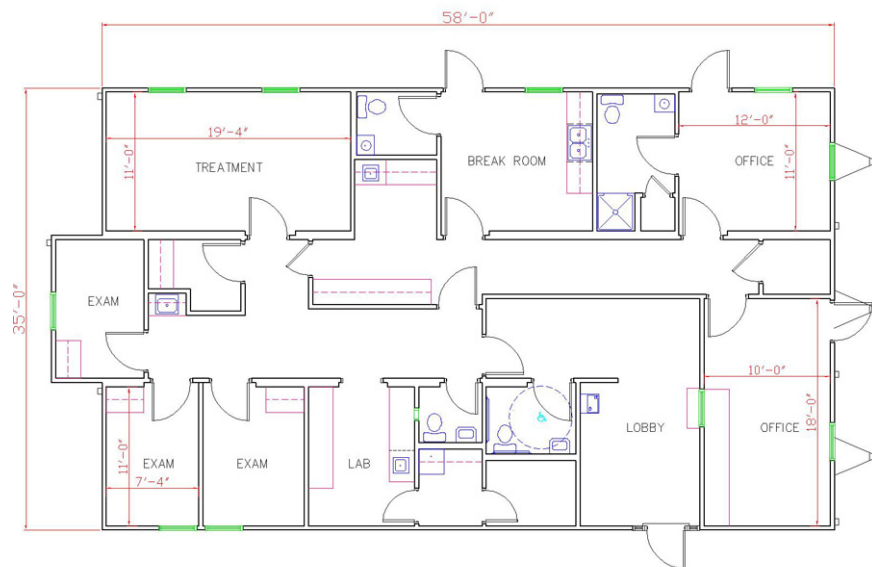
## THE ELMORE CLINIC:

Size: 35'x56"  
Square Feet: 1,960

Private Offices: 2  
Exam Rooms: 3



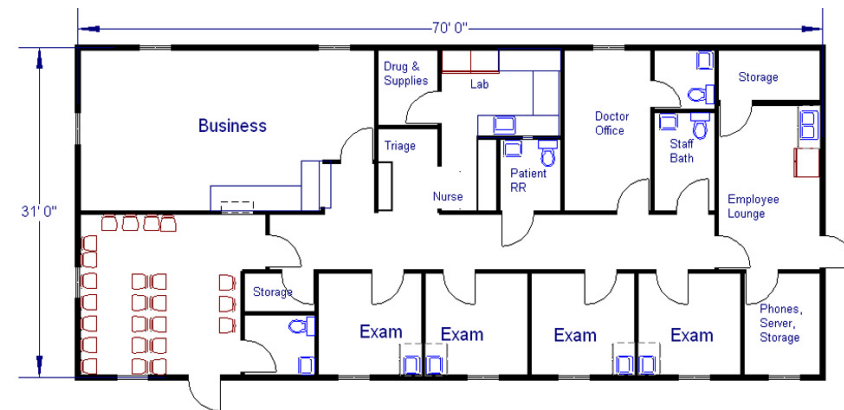




### THE HARPERSVILLE CLINIC:

Size: 35'x58'  
Square Feet: 2,030

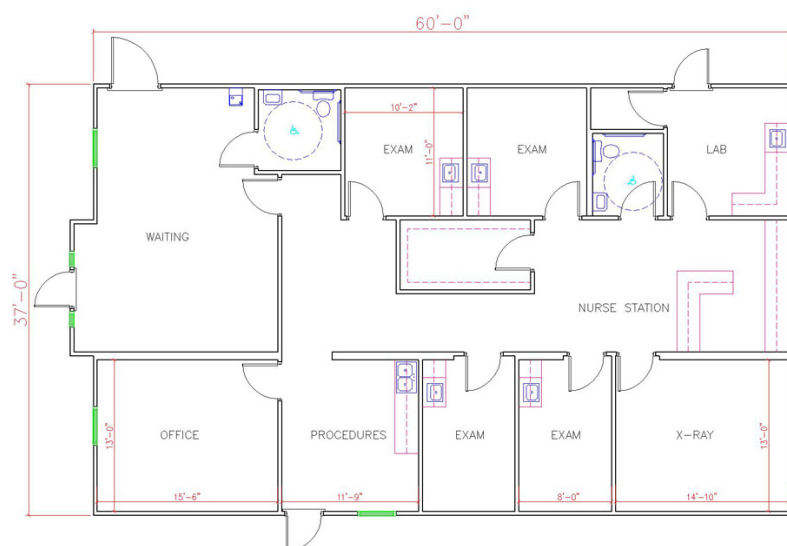
Private Offices: 1  
Exam Rooms: 4



### THE WHATLEY CLINIC:

Size: 31'x70'  
Square Feet: 2,170

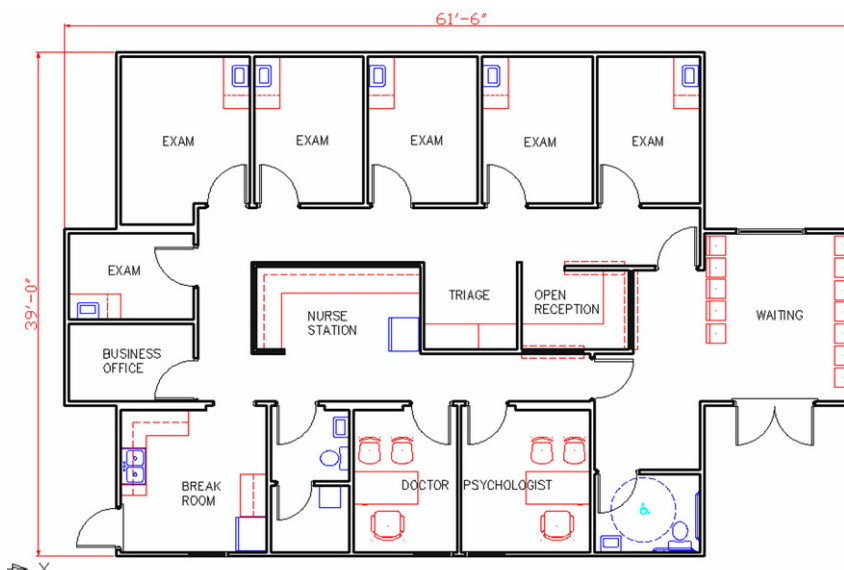
Private Offices: 1  
Exam Rooms: 4



### THE BAKER CLINIC:

Size: 37'x60'  
Square Feet: 2,220

Private Offices: 1  
Exam Rooms: 4

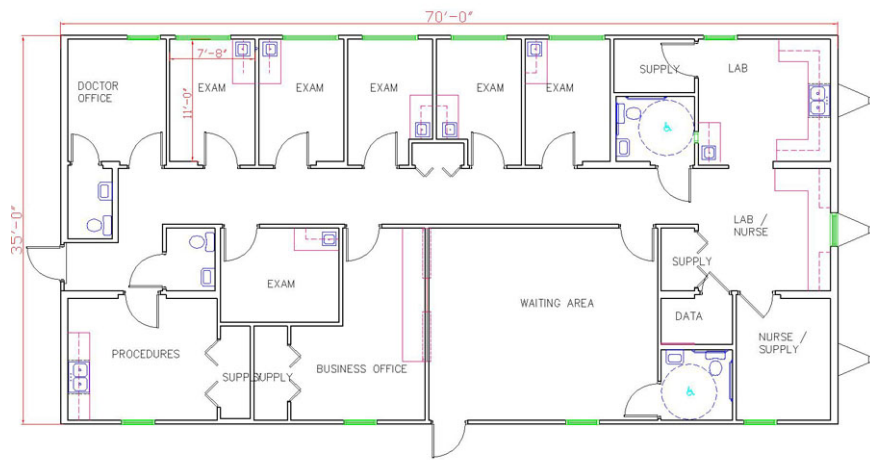


### THE MITCHELL CLINIC:

Size: 39'x62'  
Square Feet: 2,418

Private Offices: 2  
Exam Rooms: 6

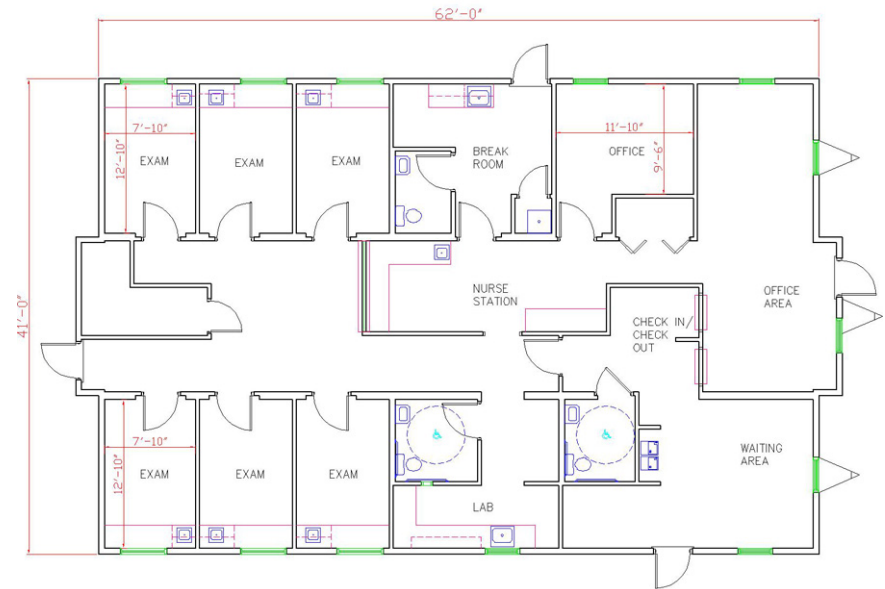




### THE BLOCTON CLINIC:

Size: 35' X 70'  
Square Feet: 2,450

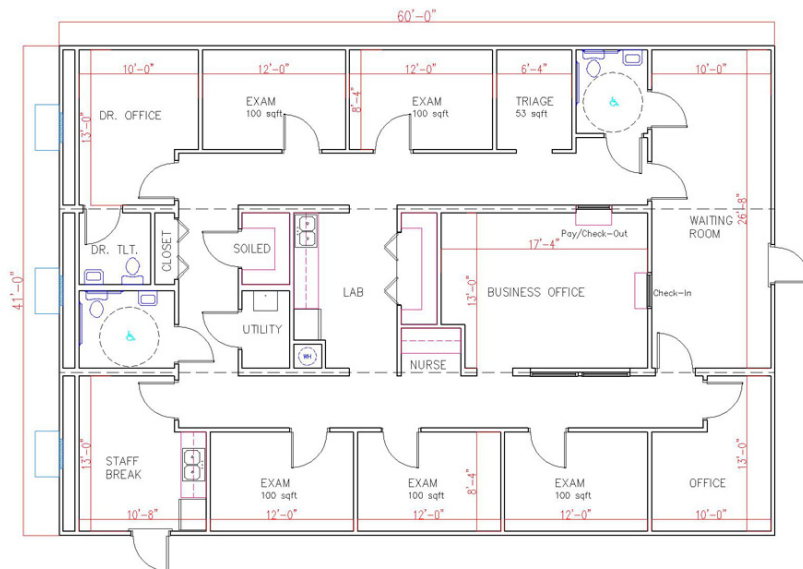
Private Offices: 2  
Exam Rooms: 6-7



### THE CLARKSVILLE CLINIC:

Size: 41'X62'  
Square Feet: 2,540

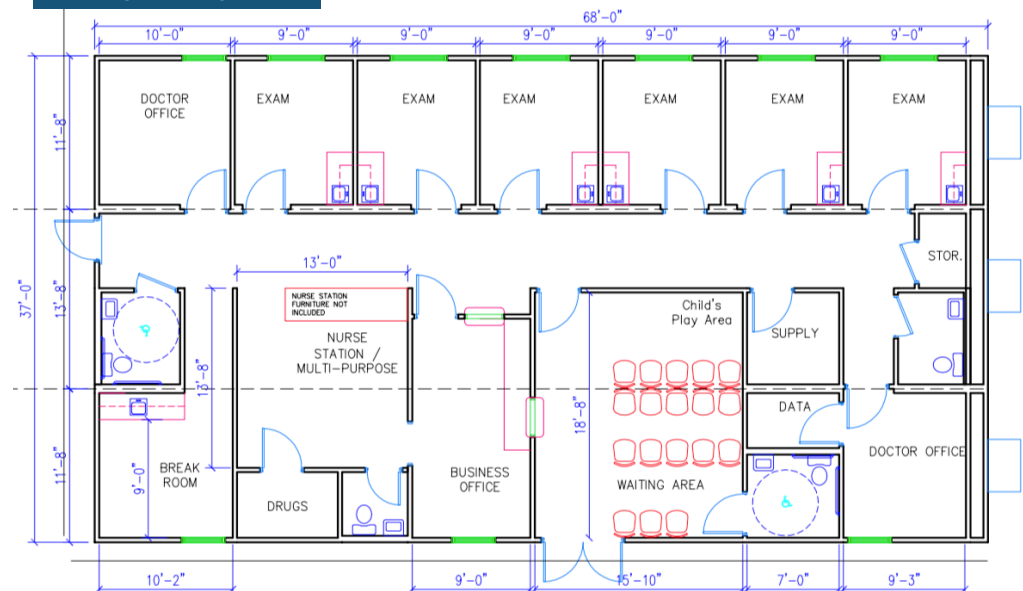
Private Offices: 1  
Exam Rooms: 6



### THE JACKSON CLINIC:

Size: 42'x60'  
Square Feet: 2,520

Private Offices: 3  
Exam Rooms: 5

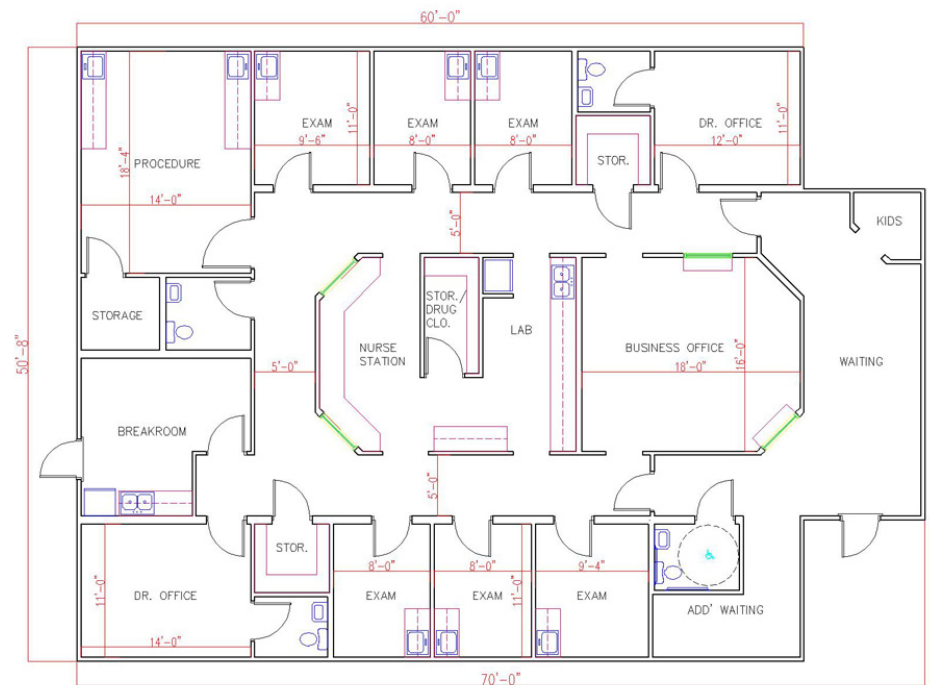
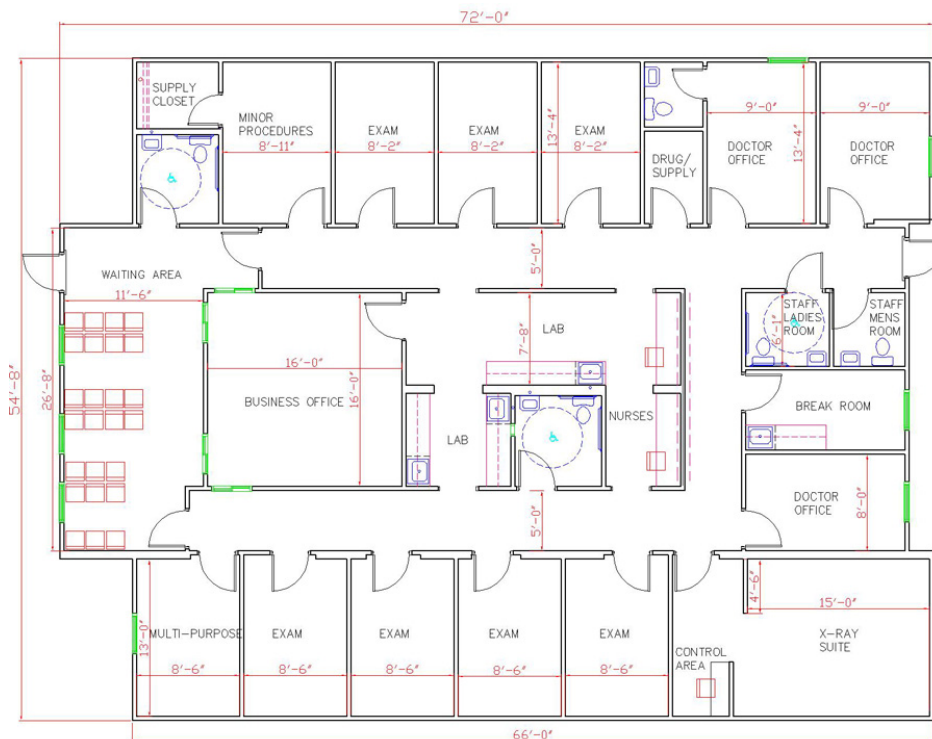


### THE BRIDGEPORT CLINIC:

Size: 37' X 68'  
Square Feet: 2,515

Private Offices: 2  
Exam Rooms: 6





## THE HARTNESS CLINIC:

Size: 55'x72'  
Square Feet: 3,960

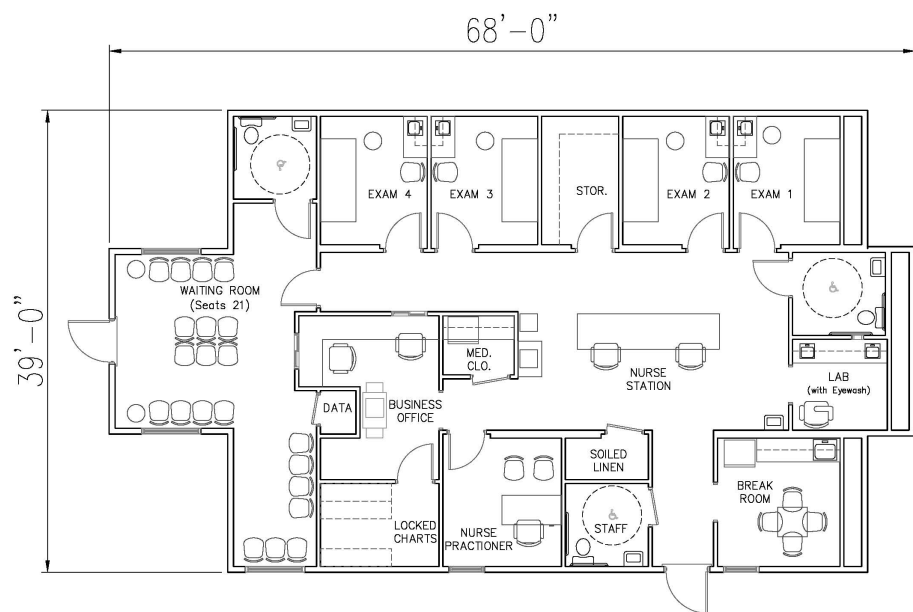
Private Offices: 3  
Exam Rooms: 9

## THE ST. MARY CLINIC:

Size: 51'x70"  
Square Feet: 3,315

Private Offices: 2  
Exam Rooms: 7

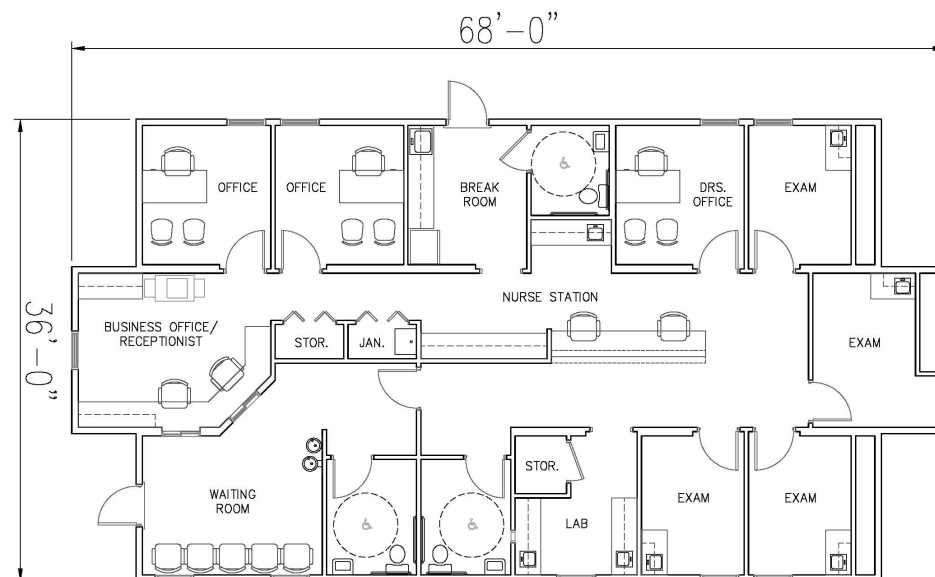




### THE GOINS CLINIC:

Size: 39' X 68  
Square Feet: 2,652

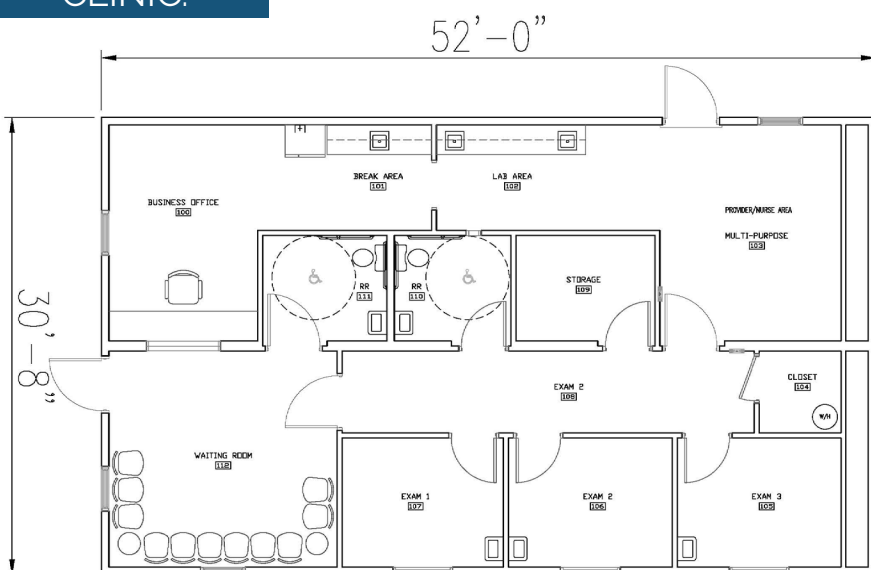
Private Offices: 1  
Exam Rooms: 4



### THE KENTWOOD CLINIC:

Size: 36'X68'  
Square Feet: 2,448

Private Offices: 3  
Exam Rooms: 4



### THE DAVIS CLINIC:

Size: 31'x52'  
Square Feet: 1,612

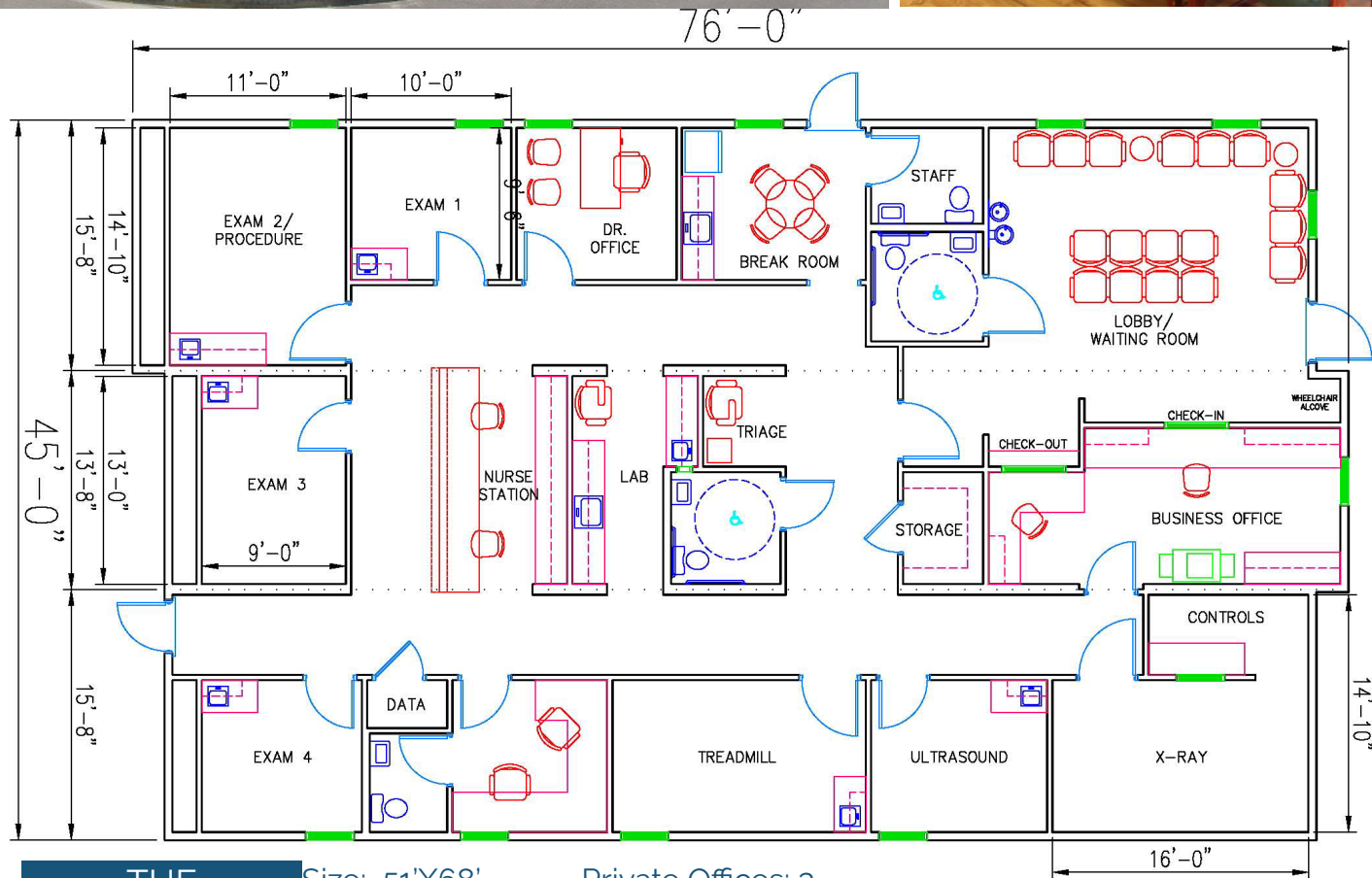
Private Offices: 1  
Exam Rooms: 3











THE  
ELKTON  
CLINIC:

Size: 51'X68'  
Square Feet: 3,350 Exam Rooms: 6-7

WWW.ROSEMEDICALBUILDINGS.COM | (888) 608-1173



# NEED ADMINISTRATIVE OFFICE SPACE?

Many hospitals use modular space for additional administrative offices or environmental services which can free up valuable hospital space for patient care. If you are remodeling, you can place a “general use” building on the parking lot and move departments in while they are under construction.

Need office furniture? Rose can provide fully-furnished buildings that are space planned with your needs in mind.



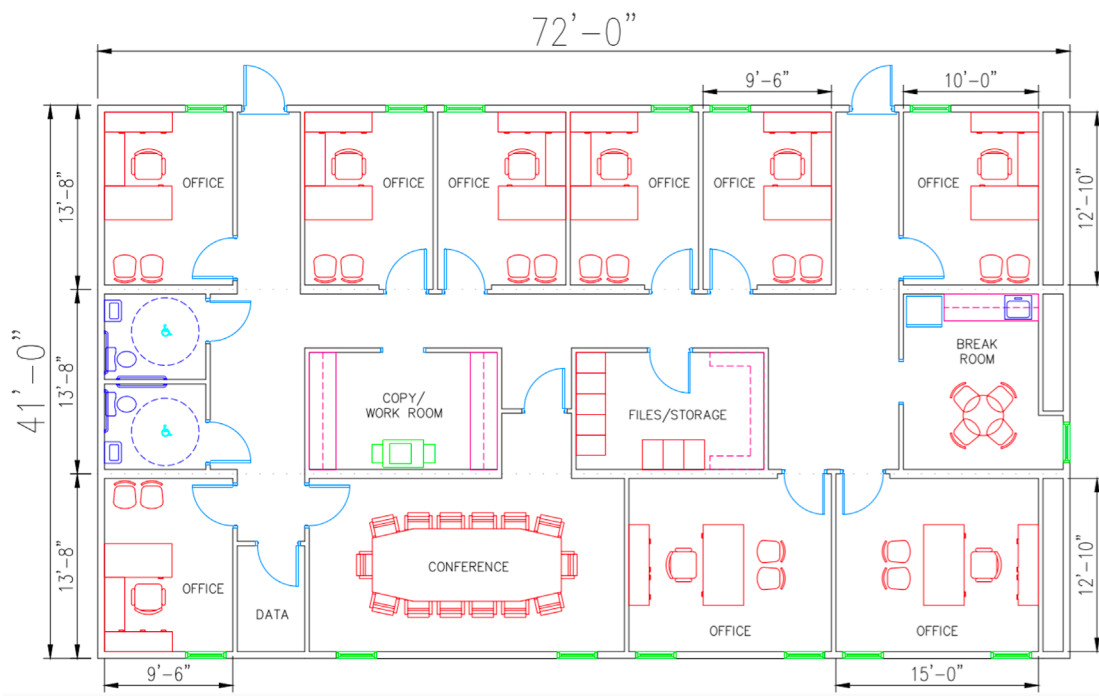
## THE MARATHON ADMIN OFFICE

Size: 64'x111'  
Square Feet: 6,833

Private Offices: 5  
Conferences: 4

Break Room: 1  
Cubicle Space: 12-24





**THE  
CAHABA  
ADMIN OFFICE:**

Size: 41' X 72'  
Square Feet: 2,952

Private Offices: 9  
Conferences: 1

## NEED OFFICE FURNITURE?

Rose can provide fully furnished office space for sale or lease. Visit [RoseOffices.com](http://RoseOffices.com) for more information.





## Why choose us?

Feature	Benefit
<b>CUSTOM SPACE PLANNING</b>	You have total control over the locations of your outlets, switches, and wiring. Our design team works with you to customize your offices to meet your individual needs and budget.
<b>ONLINE MEETINGS</b>	Real-time online meetings with our expert designers help you make changes instantly via screen-share without the hassle of emailing, mailing or faxing changes back and forth for approvals.
<b>FLOORING</b>	Specialty floor coverings infused with silver and aluminum oxide for anti-microbial/antibacterial properties and extreme scratch resistance. Most other companies use old-fashioned "VCT" square tiles that require polishing and waxing, which is a maintenance nightmare.
<b>HVAC SYSTEMS</b>	The industry standard is exterior mounted wall-hung HVACs which are inefficient, hard to maintain and require filter changes outside on a ladder. Rose HVAC systems are <b>located internally</b> in closets with easy to change filters and cannot be seen on the exterior so you keep your curb appeal.
<b>INSULATION</b>	Rose specifies a very high insulation package using an R-49 in the attic, R-30 in the floors and R-21 in the walls that exceeds current energy efficiency codes.
<b>EXTERIOR SIDING</b>	Most Rose buildings use LP Smart Side® siding that has a 50 year warranty. This extremely durable siding is resistant to rot, mold, termites, moisture and is impact resistant. Other companies use aluminum, hi-rib steel or brittle cement board siding.
<b>FURNITURE SERVICES</b>	Rose offers a complete line of factory-direct commercial office and healthcare furnishings. We only sell furniture to our customers, which cuts out the middle-man and equals a huge cost savings for you.
<b>EXPERIENCE</b>	Our modular building industry experience began in 1986. We have become the largest modular medical clinic supplier in the Southeast USA with over half of our revenue being medical related buildings. With our staff bringing many years of experience to the table, the Rose Team is extremely knowledgeable and well-equipped to handle any situation that may arise with your project. You are in very capable hands when you purchase a building from us.
<b>NO BUREAUCRACY</b>	Because we are a family-owned business, our success depends on yours. The benefit of this? If you have a problem, we can handle it instantly without having to get approvals from several layers of corporate headquarters.
	<b>Our motto is simply "Just Do the Right Thing."</b>

**(888) 608-1173**  
Call now for a FREE design consultation.



Example of ground-level entry on a Rose modular building.



Scan this QR code with your smart phone to visit our website. →



## Read a few of our dozens of references...

"In a world where so few keep their word and deliver on promises, it has been a real pleasure to do business with Rose Office Systems."

-Bill Horan, President & COO, Operation Blessing International

"The best part is that from our first conversation with Rose to actually occupying the building was less than 6 months. Garry delivers and supports a very high-quality product." - Gil Trest, University of Mississippi Medical Center, Dept of Emergency Medicine

"As you told us in our initial discussions, quality is your #1 priority and it is evident in your product. I cannot tell you enough how pleased we are with our new office." -Cherie H. Smith, President, JW Hampton Corp.

"I spoke to several modular building companies on possible solutions and needs that would work under my budget. Not only would I recommend Rose Office Systems, I would not consider anyone other than them for future projects." -Mike Adams, Director of Facilities, Gilmore Memorial Hospital

"After researching several different companies, I called Rose Offices. They stood out as the most knowledgeable of all the people I spoke with regarding construction of this type." -Frances Maples, Office Manager- Rocky Top Medical Center

"I have nothing but good things to say about the quality and service we have received from Rose Offices. Garry and his staff are not just vendors, they are our friends. People whom we feel we can always count on to do their best for PCP. -Ginger Hunt, CEO, Primary Care Providers (Rose has provided 7 clinics for PCP since 2005.)

ROSE OFFICE SYSTEMS, INC.  
COMMERCIAL MODULAR CLINICS AND ADMIN OFFICES

[WWW.ROSEMEDICALBUILDINGS.COM](http://WWW.ROSEMEDICALBUILDINGS.COM)

**(888) 608-1173**  
Call now for a FREE design consultation.