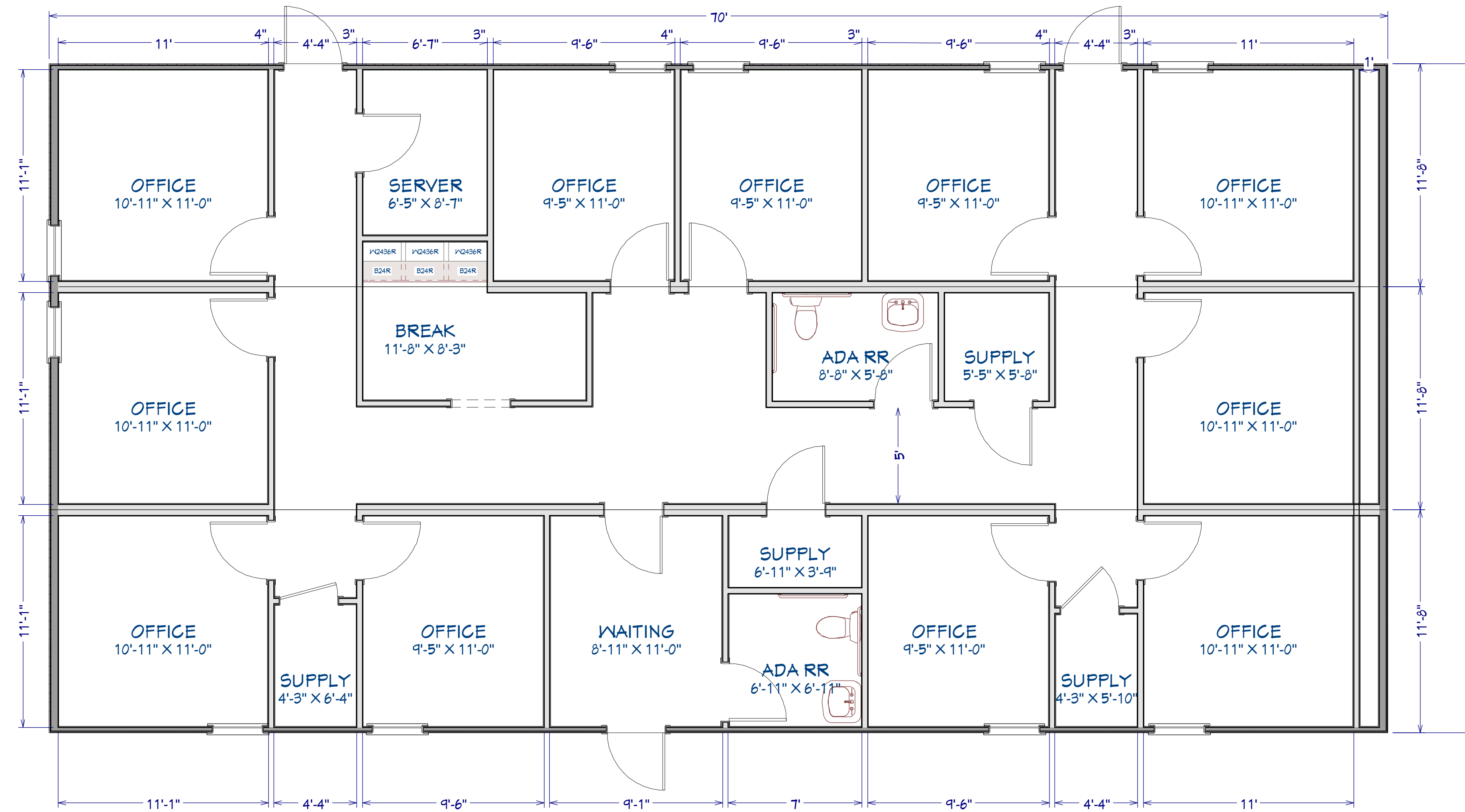


THE WAKEFIELD I-35X70 (THREE 12 WIDES)

ROSE OFFICE SYSTEMS
 PO BOX 608 SAGINAW, AL 35137
 (888) 608-1173

WWW.ROSEOFFICES.COM



REVISION TABLE	
NUMBER	DATE

THE WAKEFIELD
 9 OFFICES

DRAWINGS PROVIDED BY:
 ROSE OFFICE SYSTEMS
 PO BOX 608 SAGINAW, AL 35137
 (888) 608-1173
 WWW.ROSEOFFICES.COM

DATE:

10/17/23

SCALE:

SHEET:

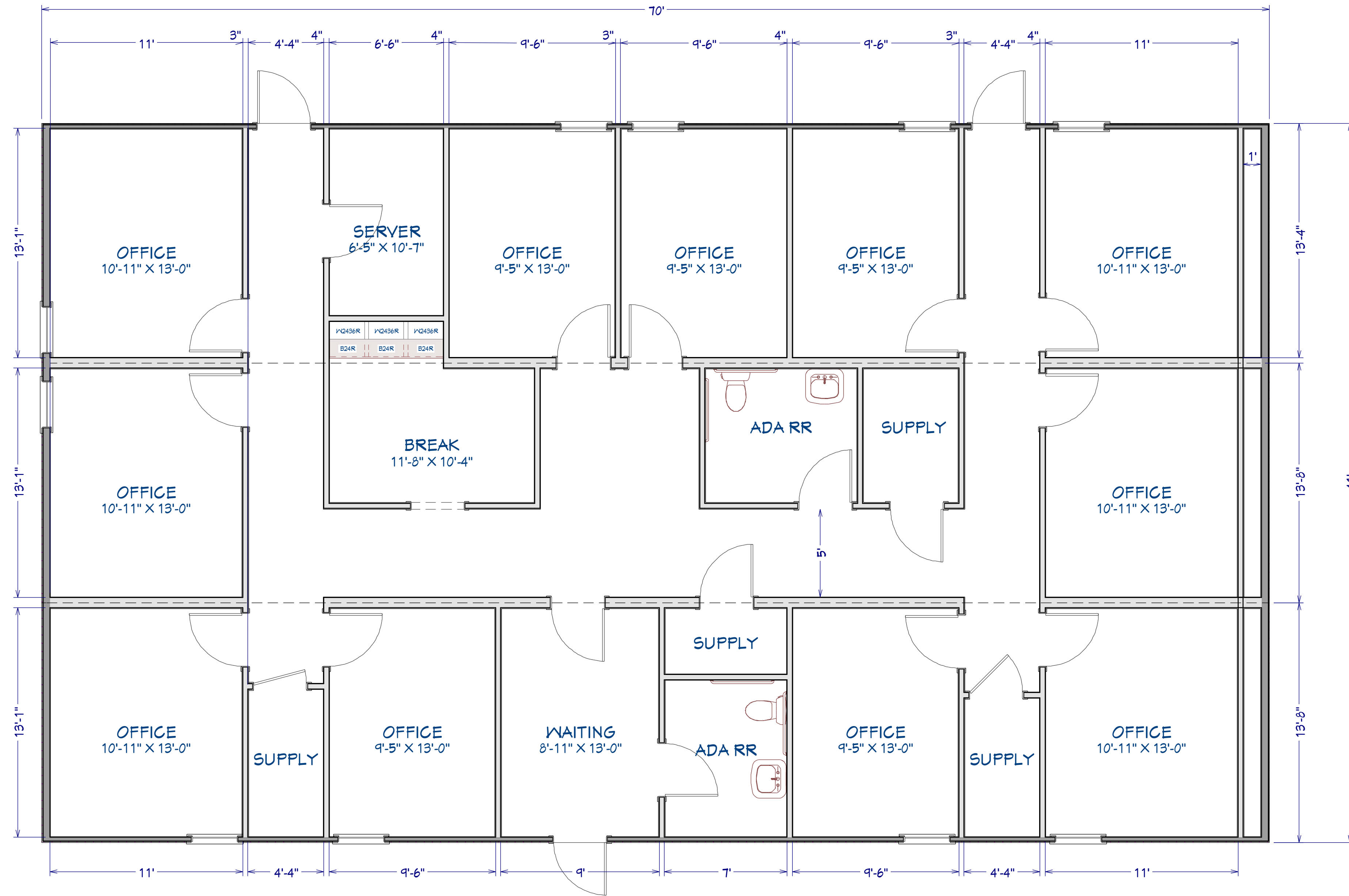
1

COPYRIGHT © ROSE OFFICE SYSTEMS, INC. DO NOT COPY OR REDISTRIBUTE.
 NOTE: FLOORPLANS ARE CONCEPTUAL ONLY AND ARE SUBJECT TO CHANGE BASED ON STATE AND LOCAL CODE RESTRICTIONS. ACTUAL BUILDING DIMENSIONS MAY VARY FROM THIS CONCEPT SKETCH.

THE WAKEFIELD II- 41X70 (THREE 14 WIDES)

ROSE OFFICE SYSTEMS
 PO BOX 608 SAGINAW, AL 35137
 (888) 608-1173

WWW.ROSEOFFICES.COM



REVISION TABLE	
NUMBER	DATE

THE WAKEFIELD
 9 OFFICES

DRAWINGS PROVIDED BY:
 ROSE OFFICE SYSTEMS
 PO BOX 608 SAGINAW, AL 35137
 (888) 608-1173
 WWW.ROSEOFFICES.COM

DATE:

10/17/23

SCALE:

SHEET:

2